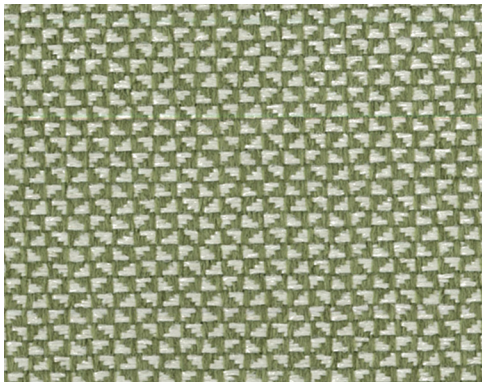
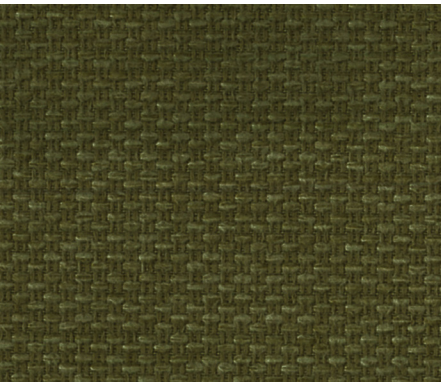


WARWICK Brooklyn



Brooklyn Olive



Balmain Olive



Brooklyn Ivory



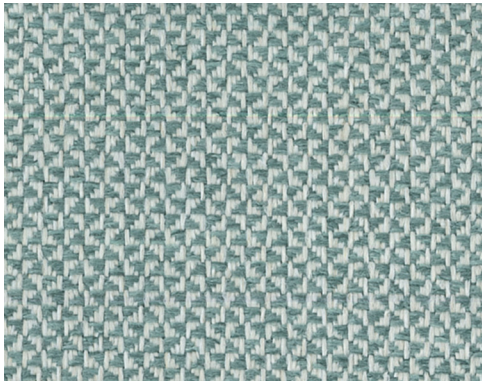
Balmain Ivory



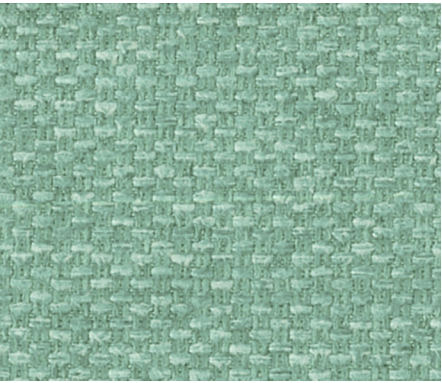
Brooklyn Honey



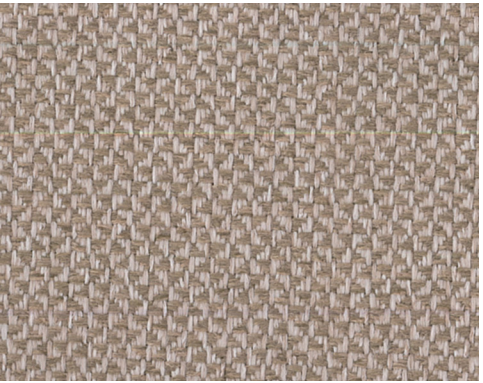
Balmain Honey



Brooklyn Seafoam



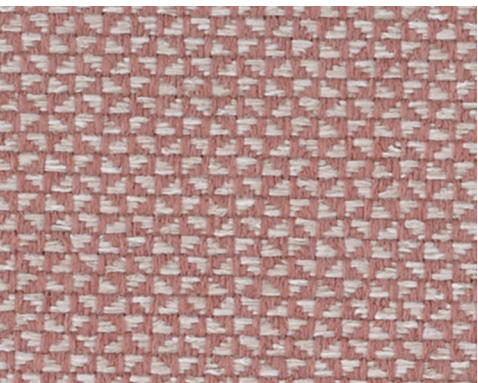
Balmain Seafoam



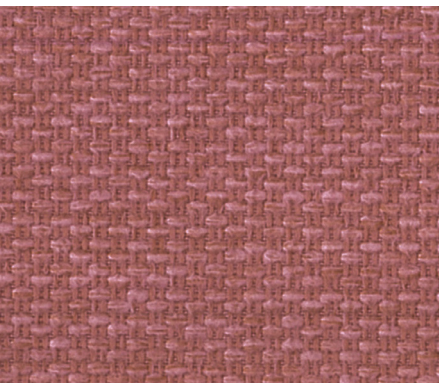
Brooklyn Biscuit



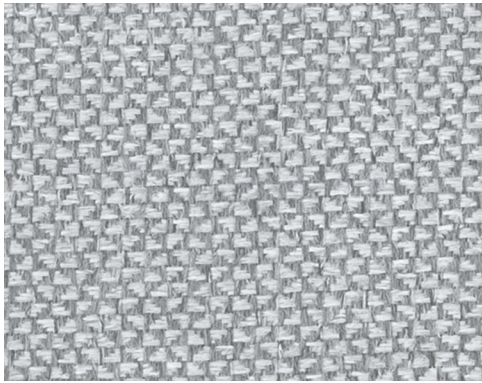
Balmain Biscuit



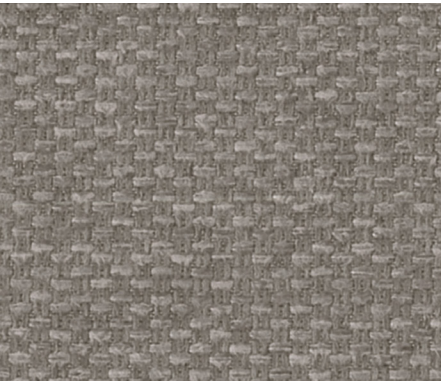
Brooklyn Blossom



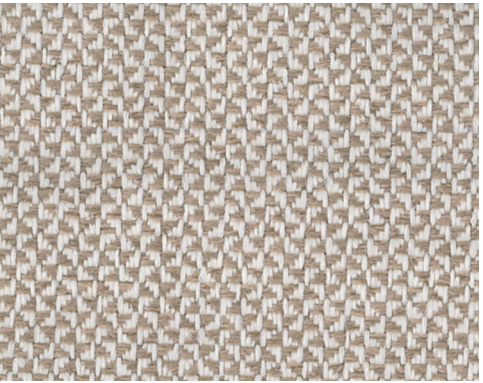
Balmain Blossom



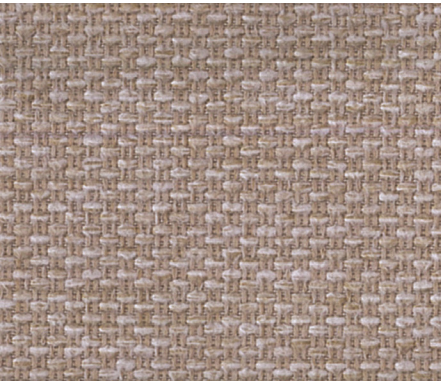
Brooklyn Silver



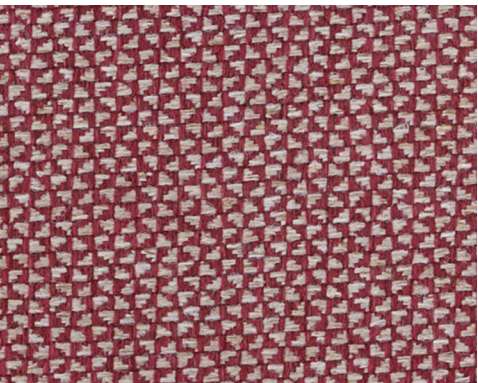
Balmain Silver



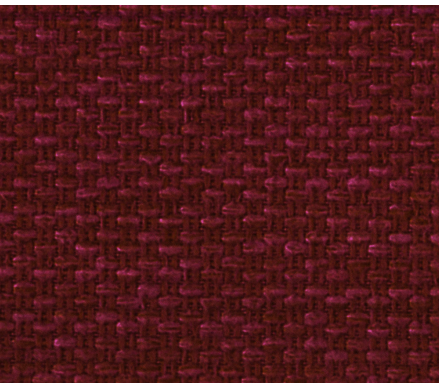
Brooklyn Stone



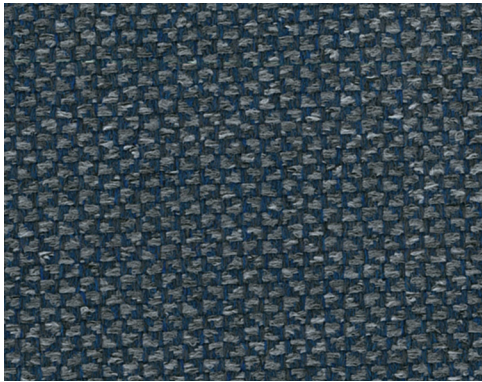
Balmain Stone



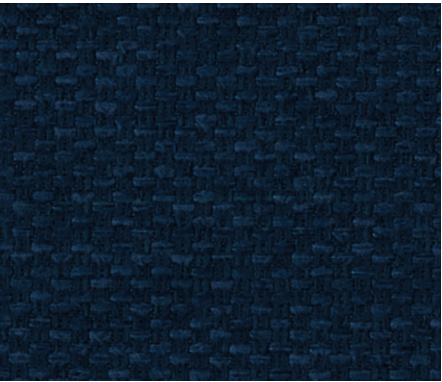
Brooklyn Rouge



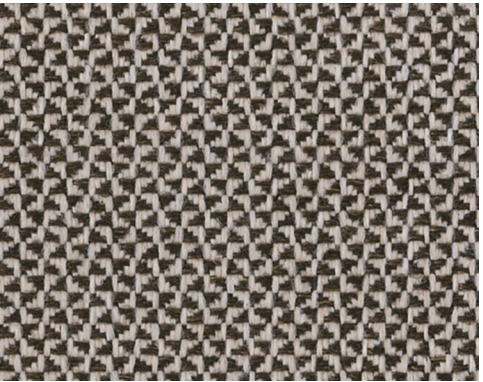
Balmain Rouge



Brooklyn Navy



Balmain Navy



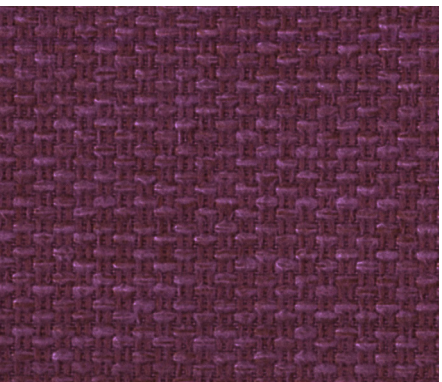
Brooklyn Walnut



Balmain Walnut

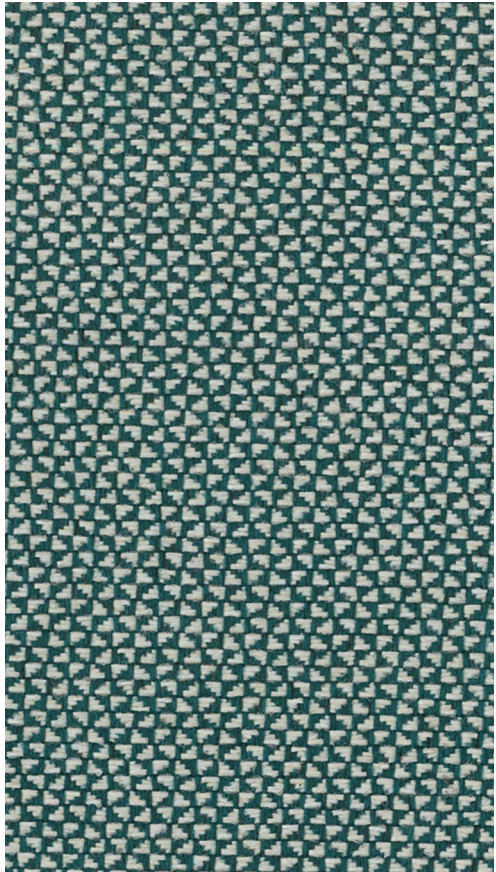


Brooklyn Aubergine

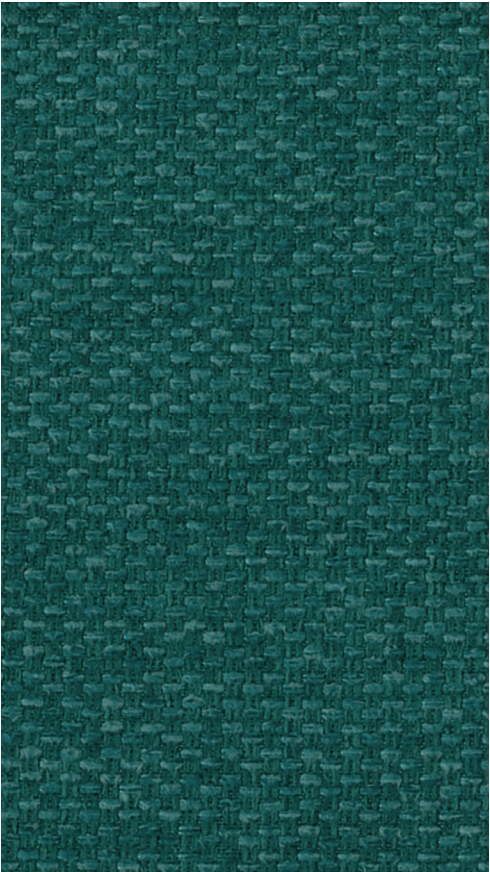


Balmain Aubergine

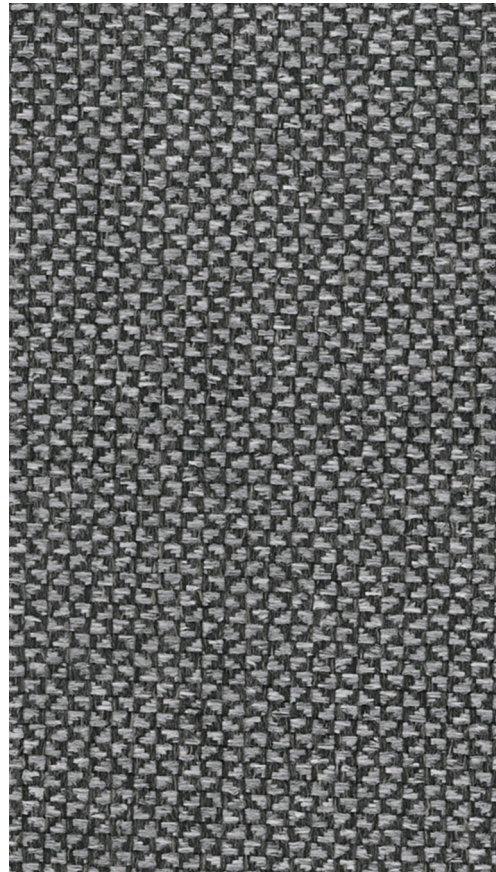
WARWICK Brooklyn



Brooklyn Teal



Balmain Teal



Brooklyn Onyx



Balmain Onyx

WARWICK Brooklyn

- Commercial Upholstery
- High Performance
- Halo Easy Clean
- Fire Rated
- Oeko-Tex Certified
- 3 Year Guarantee



WARWICK

Australia

T 1300 787 888
(toll free in Australia)
F +61 [0] 3 9415 7236
F +61 [0] 3 9416 1060
info@warwick.com.au
www.warwick.com.au

New Zealand

T +64 [0] 9 477 3080
F +64 [0] 9 479 6313
info@warwick.co.nz
www.warwick.co.nz

United Kingdom

T +44 [0] 1451 822 383
F +44 [0] 1451 822 369
info@warwick.co.uk
www.warwick.co.uk



Brooklyn

RANGE NAME:	BALMAIN	BROOKLYN
WIDTH:	145CM	142CM
WEIGHT:	370GSM	355GSM
COMPOSITION:	100% POLYESTER	100% POLYESTER
ABRASION:	100,000 WYZENBEEK	115,000 MARTINDALE
USAGE:	HEAVY COMMERCIAL	HEAVY COMMERCIAL
F/R TESTED?	YES	YES
NB:	Presented stock may vary from these samples	

- Features
- **Strength and Durability:** Tested for heavy commercial upholstery applications and extended performance and appearance characteristics.
 - **Halo Easy Clean:** High-performance, easy clean fabrics that pass the toughest testing. All Warwick Halo fabrics are woven to precise specifications and tested to exacting standards for colourfastness, abrasion, inherent stain resistance and safety.
 - **Fire Rated:** Tested to comply with AS1530.3.
 - **Guarantee:** 3 Years. Please see www.warwick.com.au for further information.
 - **Customisation:** Our Design Studio is able to develop custom designs and colour for your personalised requirements. Please contact your local representative for further information.

Australian and New Zealand Test Standards

Martindale Rub Test: (ISO 12947-2)	Heavy Duty Commercial Rating Test Report Available on Request
Wyzenbeek Rub Test: (ASTM D3597)	Heavy Duty Commercial Rating Test Report Available on Request
Fire Hazard Properties:	AS 1530 Part III Conducted Test Report Available on Request

Warwick performance standards meet or exceed industry requirements. Please note that test results are intended as a guide and should be considered in conjunction with the fabric usage.

Warwick Fabrics have a commitment to our care of the environment. We request that if these samples are no longer required please contact your local Warwick Fabrics Showroom so that we may recycle them. Thank you.



Adelaide
Brisbane
Canberra

Gold Coast
Melbourne
Perth

Sydney
India
New Zealand

South Africa
Dubai
United Kingdom

