

WEAVE

RUGS VOL.02



NEW RELEASE RUGS

4-5	Emilio
6-7	Alessandre
8-9	Bastian
10-11	Marceau

CLASSIC RUGS

12-13	Valencia
14-15	Silivo
16	Travertine Matisse
17	Glebe Gippsland

PATTERN & TEXTURE RUGS

18-19	Puglia
20	Matterhorn Zambesi
21	Andes Suffolk
22	Henley
23	Almonte
24	Lisbon Emerson
25	Umbra Denali
26	Katari Makalu
27	Granito Dolomite

INDOOR | OUTDOOR

28	Andorra
----	---------

INFORMATION

29-31	Rug Care & Protection
	Size & Colour Tolerance
	Placement & Suitability
	Custom Rug Sizes
	Contact Details

AUTUMN | WINTER 2025

At Weave, we are passionate about design.

Our collections are influenced by the world around us, mirroring what we love, and how we love to live, from relaxed coastal living, to contemporary urban life.

Inspired by travels to beloved places and born out of the desire to bring a designer quality into soft furnishings, Weave is a collection where attention to detail and quality are at the heart of every creation.



EMILIO RUG*

Hand woven with a tonal knotted fringe

100% Linen Pile

SUITABILITY

General Living
Bedroom



CANVAS
2m x 3m | 3m x 4m



OYSTER
2m x 3m | 3m x 4m



FLINT
2m x 3m | 3m x 4m



KALE
2m x 3m | 3m x 4m



TOFFEE
2m x 3m | 3m x 4m



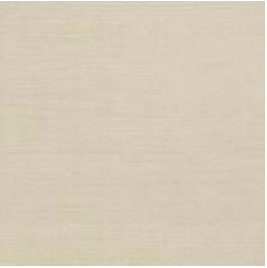
ALESSANDRE RUG*

Hand woven linear texture with contrasting cotton fringe

100% NZ Wool Pile

SUITABILITY

- General Living
- Bedroom
- Dining
- Entry | Hallway
- Kid Friendly



SEASALT
2m x 3m



MINERAL
2m x 3m



TAUPE
2m x 3m



DUSK
2m x 3m



CLAY
2m x 3m



OAKMOSS
2m x 3m



BASTIAN RUG*

Loom knotted rib with bound edge

100% Jute Pile

SUITABILITY

General Living

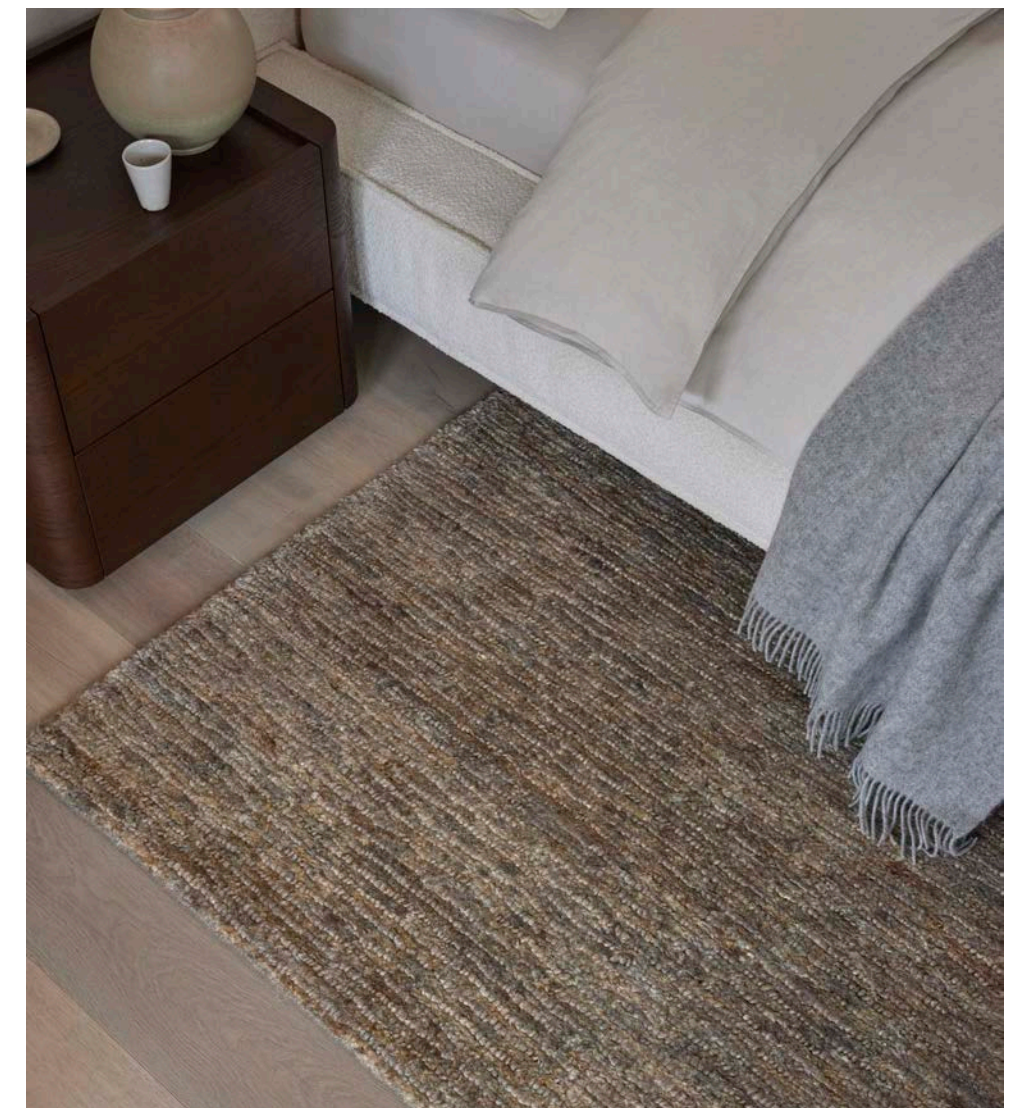
Bedroom

Dining

Entry | Hallway

Kid Friendly

TEXTURE



MACADAMIA

2m x 3m



FOSSIL

2m x 3m



NATURAL

2m x 3m



DUSK

2m x 3m



OAKMOSS

2m x 3m



MARCEAU RUG*

Loom knotted loop pile
with a bound edge

80% Wool 20% Polyester Pile

SUITABILITY

- General Living
- Bedroom
- Dining
- Entry | Hallway
- Kid Friendly

TEXTURE



SHALE

2m x 3m | 3m x 4m



FOX

2m x 3m | 3m x 4m



TAUPE

2m x 3m | 3m x 4m



ANGORA

2m x 3m | 3m x 4m



VALENCIA RUG

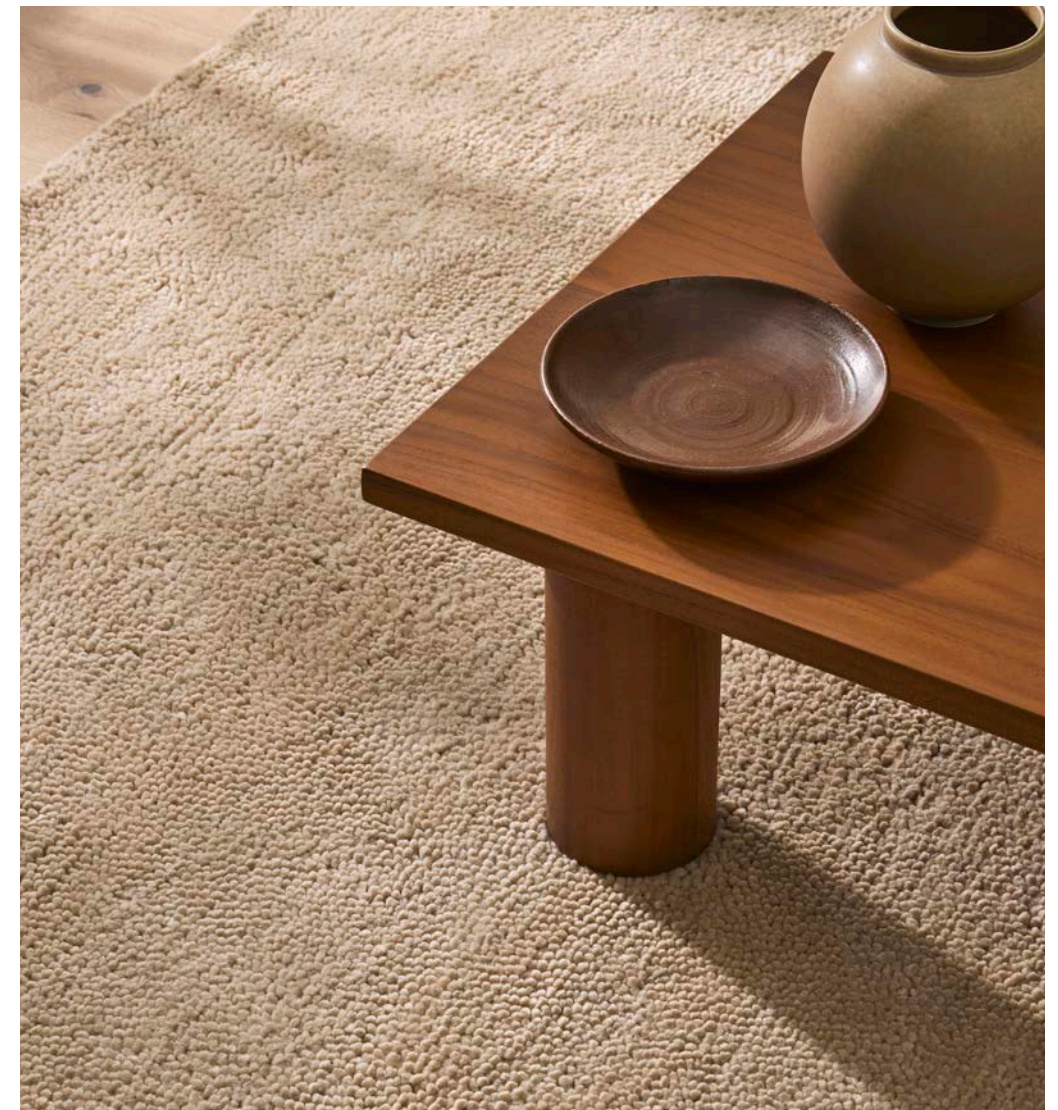
Loom knotted with a bound edge

100% NZ Wool Pile

SUITABILITY

General Living
Dining
Bedroom
Entry/Hallway

CLASSIC



CAMEL

2m x 3m | 3m x 4m



CLOUD

2m x 3m | 3m x 4m



DUNE

2m x 3m | 3m x 4m



LATTE

2m x 3m | 3m x 4m



TOFFEE

2m x 3m



SILVIO RUG

Hand woven with a recessed end
feature and micro fringe

100% Wool Pile

SUITABILITY

- Entry/Hallway
- General Living
- Dining
- Kid Friendly



HEM AND
FRINGE DETAIL

CLASSIC



DIJON
2m x 3m | 3m x 4m



SIENNA
2m x 3m | 3m x 4m



DOVECOTE
2m x 3m | 3m x 4m



ECRU
2m x 3m | 3m x 4m



FLINT
2m x 3m | 3m x 4m



FOG
2m x 3m | 3m x 4m



DUSK
2m x 3m | 3m x 4m



OAKMOSS
2m x 3m | 3m x 4m

CLASSIC



TRAVERTINE RUG

Loom knotted rib with feature end

90% Viscose 10% Wool Pile

SUITABILITY

Low Traffic Living
Bedroom



MARBLE

2m x 3m



PEWTER

2m x 3m



BUFF

2m x 3m

CLASSIC



GLEEBE RUG

Handwoven intentional irregular texture

60% Viscose 40% Wool Pile

SUITABILITY

Low Traffic Living
Bedroom
General Living



OAT

2m x 3m



SILVER

2m x 3m



SHADOW

2m x 3m



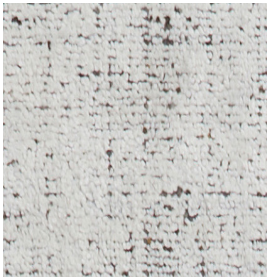
MATISSE RUG

Loom knotted textured plain

90% Viscose 10% Wool Pile

SUITABILITY

Low Traffic Living
Bedroom



MARBLE

2m x 3m



SHALE

2m x 3m



BUFF

2m x 3m



GIPPSLAND RUG

Handwoven traditional design with
textured stripe

80% Wool 20% Viscose Pile

SUITABILITY

General Living
Dining
Bedroom
Entry/Hallway



ALLOY

2m x 3m



STONE

2m x 3m



PUGLIA RUG

Multi-tone chunky weave with fringe detail

Hand woven

70% Polyester 30% Wool Pile

SUITABILITY

General Living

Dining

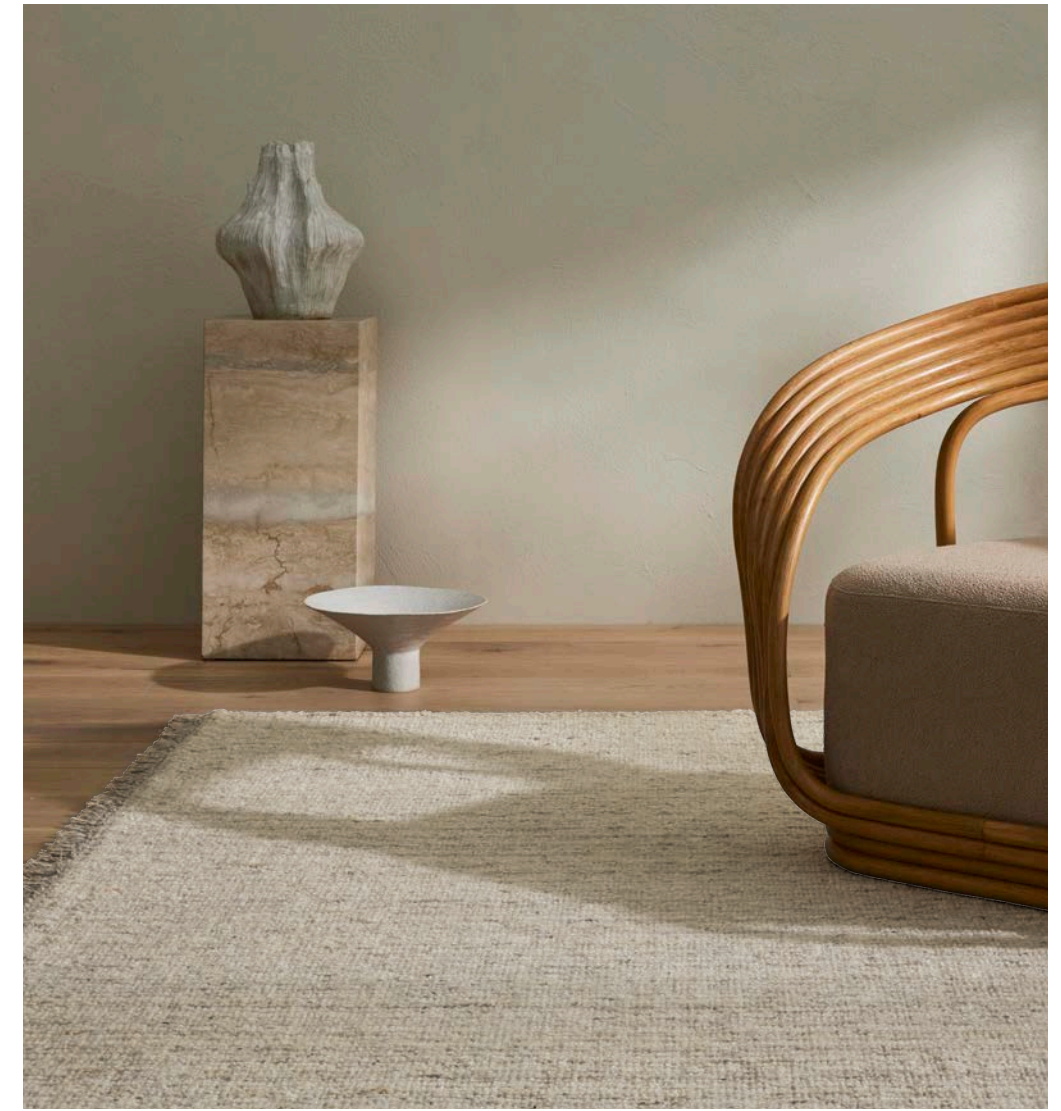
Bedroom

Kid Friendly



FRINGE DETAIL

PATTERN & TEXTURE



FOX
2m x 3m



HEMP
2m x 3m



TAUPE
2m x 3m



FOSSIL
2m x 3m



PIGEON
2m x 3m

PATTERN & TEXTURE



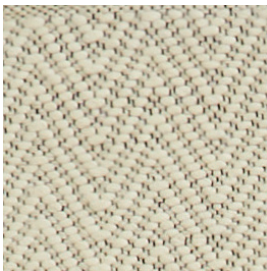
MATTERHORN RUG

Handwoven tonal chevron design

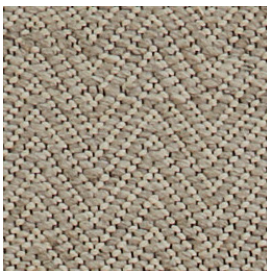
70% Wool 30% Cotton Pile

SUITABILITY

- General Living
- Dining
- Bedroom
- Kid Friendly
- Entry/Hallway



SEASALT
2m x 3m



BASALT
2m x 3m



TAR
2m x 3m

PATTERN & TEXTURE



ANDES RUG

Handwoven duo-tone rib

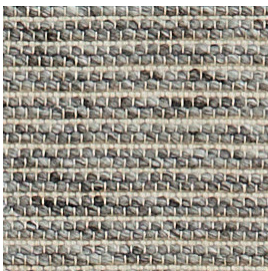
50% Wool 50% Cotton Pile

SUITABILITY

- General Living
- Bedroom
- Kid Friendly
- Entry/Hallway



SANDSTORM
2m x 3m | 3m x 4m



FEATHER
2m x 3m



ZAMBESI RUG

Handwoven chevron duo-tone design

60% Wool 40% Viscose Pile

SUITABILITY

- General Living
- Bedroom



SANDSTORM
2m x 3m



FEATHER
2m x 3m



NATURAL
2m x 3m



MINERAL
2m x 3m



PEARL
2m x 3m

SUFFOLK RUG

Handwoven chunky braided stripe

100% Jute Pile

SUITABILITY

- General Living
- Dining
- Bedroom
- Kid Friendly
- Entry/Hallway



HENLEY RUG

Loom knotted chunky boucle with tonal variation

100% New Zealand Wool Pile

SUITABILITY

- Entry/Hallway
- General Living
- Dining
- Kid Friendly



NATURAL
2m x 3m



IVORY
2m x 3m



PELICAN
2m x 3m



ALMONTE RUG

Loom knotted textured plain

70% Bamboo Silk 30% Wool Pile

SUITABILITY

- Low Traffic Living
- Bedroom



HONEYCOMB
2m x 3m



CLAY
2m x 3m



MINK
2m x 3m



PLUTO
2m x 3m

PATTERN & TEXTURE



LISBON RUG

Handwoven duo-tone chunky stripe

50% Jute Pile 50% Wool Pile

SUITABILITY

- General Living
- Dining
- Bedroom
- Kid Friendly
- Entry/Hallway



SEASALT

2m x 3m | 3m x 4m

PATTERN & TEXTURE



UMBRA RUG

Handwoven organic texture with feature stripe

100% Jute

SUITABILITY

- General Living
- Dining
- Bedroom
- Kid Friendly
- Entry/Hallway



NATURAL

2m x 3m



EMERSON RUG

Handwoven chunky textured plain

60% Wool 40% Viscose

SUITABILITY

- General Living
- Bedroom



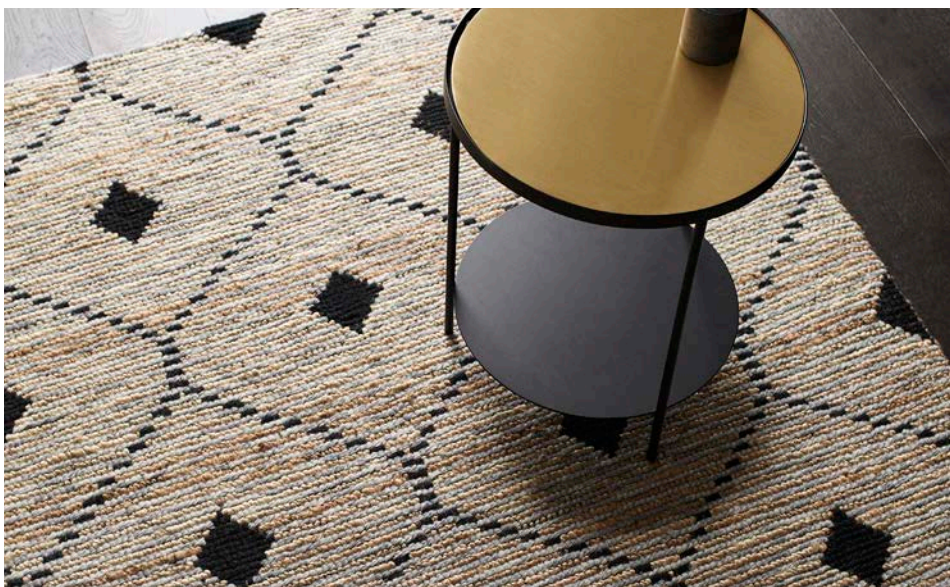
FEATHER

2m x 3m | 3m x 4m



SEASALT

2m x 3m



DENALI RUG

Handwoven bold geometric

50% Jute 50% Wool Pile

SUITABILITY

- General Living
- Dining
- Bedroom
- Kid Friendly
- Entry/Hallway



SANDSTORM

1.6m x 2.3m | 2m x 3m

PATTERN & TEXTURE



KATARI RUG

Loom knotted with a subtle flowing diamond design

70% Viscose 30% Wool Pile

SUITABILITY

Low Traffic Living
Bedroom



MOON

2m x 3m



MAKALU RUG

Handwoven loop pile geometric

70% Wool 30% Cotton

SUITABILITY

General Living
Dining
Bedroom
Kid Friendly
Entry/Hallway



FEATHER

1.6m x 2.3m

PATTERN & TEXTURE



GRANITO RUG

Loom knotted boucle look with tonal variation

50% Bamboo Silk 25% Wool 25% Viscose Pile

SUITABILITY

Low Traffic Living
Bedroom



SHALE

2m x 3m | 3m x 4m



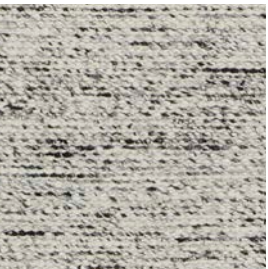
DOLOMITE RUG

Handwoven peppered yarn textural design

90% Wool 10% Viscose Pile

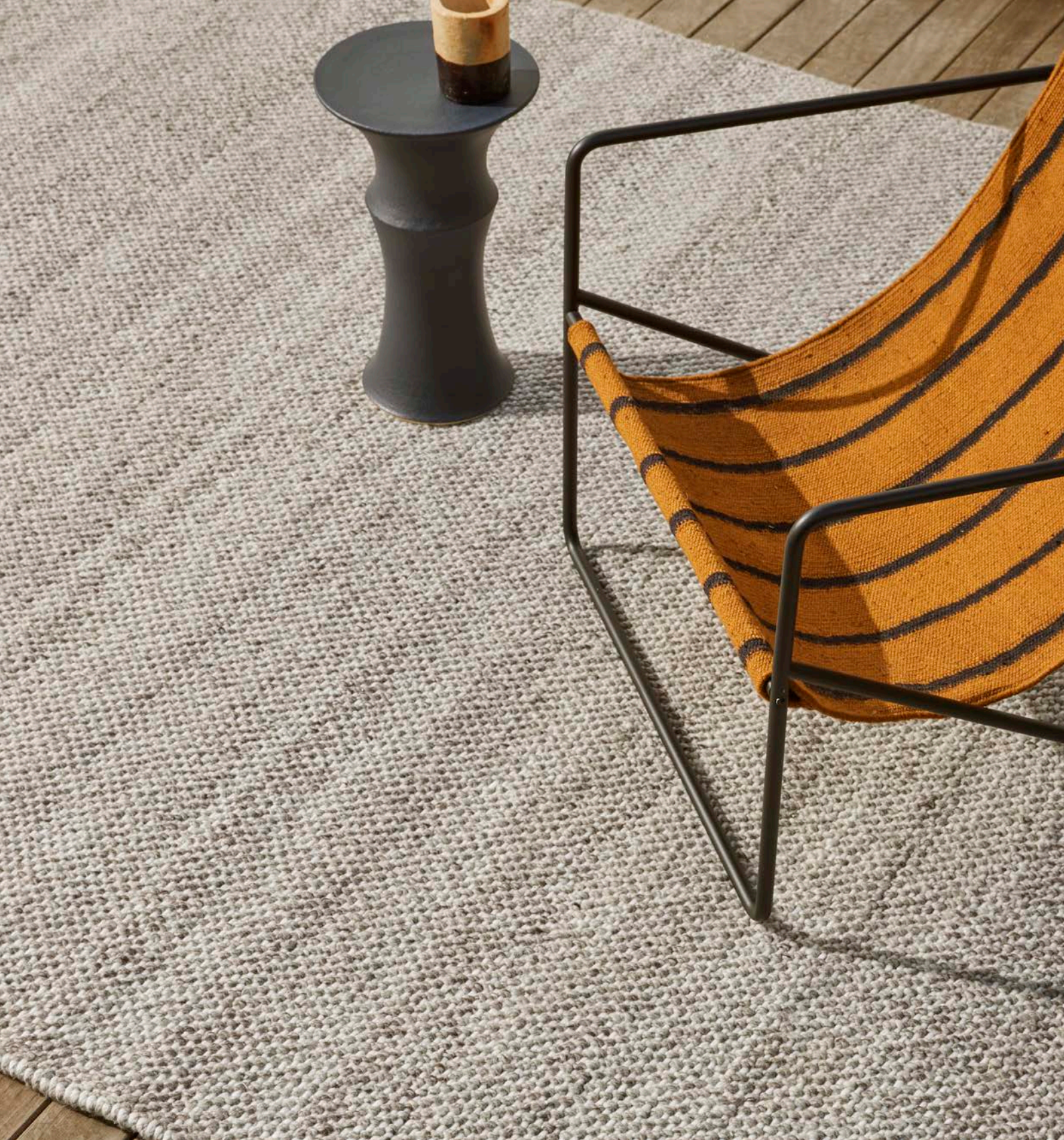
SUITABILITY

General Living
Bedroom
Kid Friendly



PEPPER

2m x 3m



DOVE
2m x 3m



ANDORRA RUG

Handwoven indoor / outdoor

100% Recycled Polyester

SUITABILITY

General Living
Patio
Alfresco
Dining
Bedroom
Kid Friendly
Entry/Hallway

THE WEAVE DIFFERENCE

All our rugs are either hand-woven or hand-knotted on looms in northern India. Rugs have been woven in this area for generations using skills and techniques that have been handed down through artisan families.

For our indoor designs, we choose to use predominantly natural fibres for their beauty and longevity using materials such as wool, cotton, viscose, bamboo silk and jute.

For our outdoor range we use a premium recycled polyester for its reduced environmental impact, durability and ability to withstand external elements. Our outdoor rugs are unbacked to ensure effective drainage and faster drying characteristics.

Each of our hand-woven rugs has a unique beauty in their individuality and durability with a suitable backing for protection and secured edging to provide strength and stability, keeping each rug square and in shape.

We work closely with our suppliers to create premium products for our customers while ensuring positive outcomes for the local communities where they are made. We are proud members of Care & Fair, an international organisation that aims to eliminate illegal child labour in rug weaving areas. Our contributions help to improve the living standard of families and communities in these regions. All our rugs show the Care & Fair logo to indicate our commitment to this cause with a percentage of our sales contributing directly to this organization.



GENERAL RUG CARE

It is best to vacuum your rug before any dirt is embedded, ideally twice a week in the first few months with low suction power. Dirt acts as an abrasive grit against the fibres, if not removed over time it will break down the fibres causing permanent damage.

All rugs made from natural fibres can result in shedding and pilling. This is a natural characteristic and the removal of any loose fibres can be rectified by regular vacuuming with a good quality vacuum cleaner using a flat head attachment to avoid agitating the fibres. Vacuum in one direction against the pile grain then repeat in the opposite direction to lift the pile and allow smoothing on the second pass. The amount a rug sheds or pills can alter due to traffic, moving furniture, vacuuming or other mechanical agitation.

Rugs should be regularly rotated to ensure even wear, especially where extended periods of sun exposure may cause fading. Rotate the rug as well as relocate items to avoid this.

Due to changes in pile and weave direction shading may occur, this is a natural characteristic of carpets and rugs.

Strands of fibre (pop ups) may work their way to the surface of the rug and is a normal occurrence as the fibres settle. Pop ups can either be trimmed or pushed through to the base of the rug. Never pull out these threads as this can create holes in the weave.

We recommend that indoor rugs are used with an underlay, this will help to prevent the risk of dye transfer to the undersurface, prevent severe rug movement and to help protect flooring.

SPILLS

Treat any spills immediately using a white micro-fibre cloth or paper towel. Press down onto the area to soak up the residue, DO NOT scrub as it may cause permanent pile damage. Use a natural fibre rug cleaner to help lift the stain. If the stain persists, contact a professional rug cleaner as soon as possible.

For detailed cleaning instructions, please visit our website.

RUG PROTECTION SYSTEM

At Weave, we proudly align with companies that have the same passion, drive and ethical standards in the product and service they offer. This is why we exclusively recommend Premium Surface Protection and their rug protection formulas MicroSeal & Fiber ProTector. They are experts in their field on all things relating to fibre and surface protection. Once you have purchased and received your Weave rug, we recommend you contact Premium Surface Protection directly for a free quote to treat your purchase so that your investment can continue looking like the day when you first unrolled it.

MicroSeal & Fiber ProTector are unique permanent solutions that combine protection against stains and damaging UVA and UVB rays. Additional benefits include anti-static characteristics, flame and fume retardants as well as eliminating mould, mildew and bacteria. Treated fibres are up to 60% more resistant to wear and abrasion because dirt/soiling must wear through the protective treatment before causing wear on the fibres themselves.

Contact Premium Surface Protection quoting WEAVEHOME for your free quote. All treatments provided by Premium Surface Protection also receive a free chamois sponge. Available nationally within Australia and New Zealand.

Australia:
premiumsurfaceprotection.com.au | 1800 189 907
info@premiumsurfaceprotection.com.au

New Zealand:
premiumsurfaceprotection.co.nz | (+64) 0800 001 069
info@premiumsurfaceprotection.co.nz

PRODUCT CHARACTERISTICS

Each Weave piece is custom made, meaning no two items will be the same. Irregularities in materials, fabrics or prints are a characteristic of the manufacturing process and are an integral part of the design. As such, there may be slight markings or variations in appearance (including colour, pattern, size or finishing) which are technically unavoidable and/or intentional.

RUG SIZE & COLOUR TOLERANCE

Our rugs are individually handmade and woven, as such size thickness and alignment can alter by +/- 5% from the dimensions ordered. We also make every effort to ensure there is minimal colour variation between sample and stocked, however due to the natural fibres, minor variations may occur to the characteristics in the manufacturing and dying of each type of fibre. +/- 5% is the standard tolerance for carpet colour variance.

Rug care instructions can be found on the underside of your rug at time of delivery. Copies of our current range care instructions and further care and maintenance can also be found at; weavehome.com.au and weavehome.co.nz.

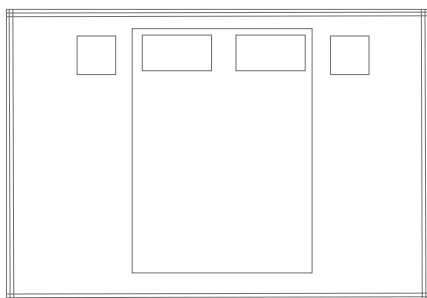
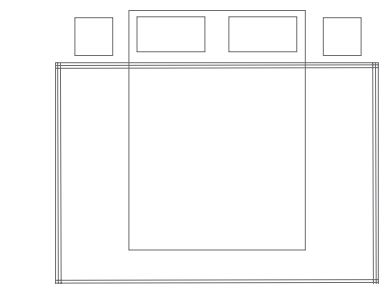
Our advice is given in good faith and should not be considered a guarantee. If in any doubt, always consult a professional cleaning company who have experience in rug cleaning.

RUG PLACEMENT & SUITABILITY

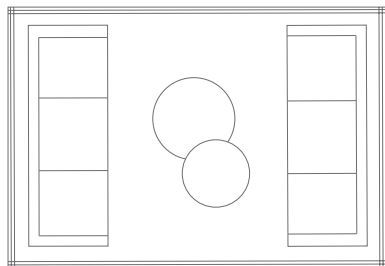
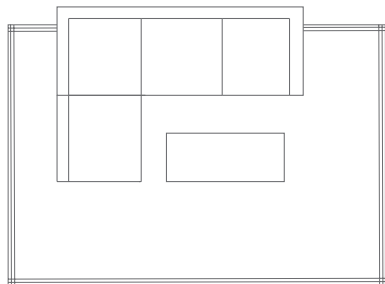
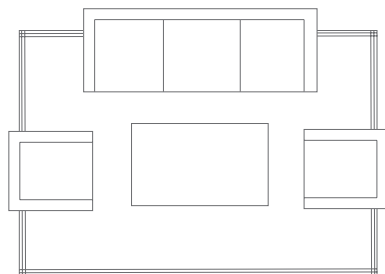
A well-proportioned rug can tie an entire room together, but it can be tricky to get the size and placement right for each individual space. A rug should be large enough to anchor your furniture whilst leaving some of the floor exposed. When in doubt, go for the biggest size possible. When choosing a rug, it pays to consider the area that the rug is for and determine the suitability based on the pile and fibre type. We have put together this guide for you to navigate this choice and select a rug that is perfect for your space – room by room.

Bedroom

Bedrooms are an ideal space to add a rug to give a luxurious and warm feel to the room. Rugs in bedrooms are ideally placed under the bed to give a soft and cosy underfoot feel when getting in and out. A rug in your bedroom will also soften the space and provide a comforting layer of warmth. Generally, bedrooms are lower traffic areas that means rugs with higher pile or more delicate fibres are entirely suitable here.

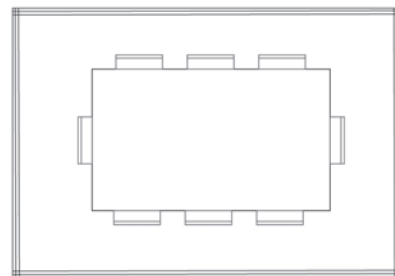


A rug in your living area will create a warm and inviting space, particularly if you have hard flooring. It will provide a visual anchor as well as add comfort and warmth for those that like to sit or play on the floor. Often it is wise to choose a rug first and then build the interior scheme around the colour and texture. For a living environment the best rugs will be warm and inviting – you can choose a plush and textured rug or flatter jute all dependent on the look and feel that you want. As furniture is not generally moved often in a living space – a higher pile or more decorative weave technique will be acceptable. But this really depends on your household and how the space is used.



When considering a rug for a hallway or entrance you must consider these spaces as higher traffic areas where people are generally wearing footwear. As well as being the area where outside foot traffic is often bringing the exterior in such as water and dirt. With this in mind – a harder wearing and lower pile rug is the best choice. A rug in these areas will also soften the sound of footsteps so adding a rug to your hallway will provide a sound barrier to the rooms off the hallway. We recommend our 100% jute or lower pile wool blends.

Dining areas tend to be higher traffic spaces with multiple chairs moving in and out regularly and an increase in spills and crumbs falling onto the rug. This is why we recommend avoiding a high pile rug here and suggest a flat weave instead. It is important to choose a rug size that will fit both the table and the chairs. Rugs that are too small can trip up the dining chairs when pulled out - not only does this become dangerous but also can damage the edges of the rug. You want to avoid a high pile or any rugs that have a raised or uneven weave technique for their crumb catching deep crevices. Jute and low pile wool blend rugs are the best choice for your dining area.



If we do not have a rug size that suits your needs, we offer a rug customisation service on most of our styles. To request a custom quote, email your request through to the Weave team at hello@weavehome.com.au.

The following details must be submitted for a quote to be obtained;

- Customer Name
- Postal address (not PO BOX)
- Mobile number
- Email address
- Rug size
- Rug colour (can only be selected from each styles existing colour palette, custom colours are not available)
- Rug style

CATALOGUE COLOUR REFERENCE

Please note all photography in this catalogue is intended as a visual representation only. Although care is taken to ensure images are not misrepresented, colours are not exact matches due to variance in printer standards and monitor calibration.

WARWICK FABRICS AUSTRALIA PTY LTD
Web: weavehome.com.au
Email: hello@weavehome.com.au
Phone: 1300 787 888
@weavehomeau

Web: weavehome.co.nz
Email: hello@weavehome.co.nz
Phone: 09 477 3080
@weavehomenz

NOTES

[illegible]

