

WEAVE
RUGS





AUTUMN WINTER 2026

At Weave, we are passionate about design. Our collections are influenced by the world around us, mirroring what we love, and how we love to live, from relaxed coastal living, to contemporary urban life.

Inspired by travels to beloved places and born out of the desire to bring a designer quality into soft furnishings, Weave is a collection where attention to detail and quality are at the heart of every creation.

NEW RELEASE RUGS

- 4-5 Cassio
- 6-7 Remo

CLASSIC RUGS

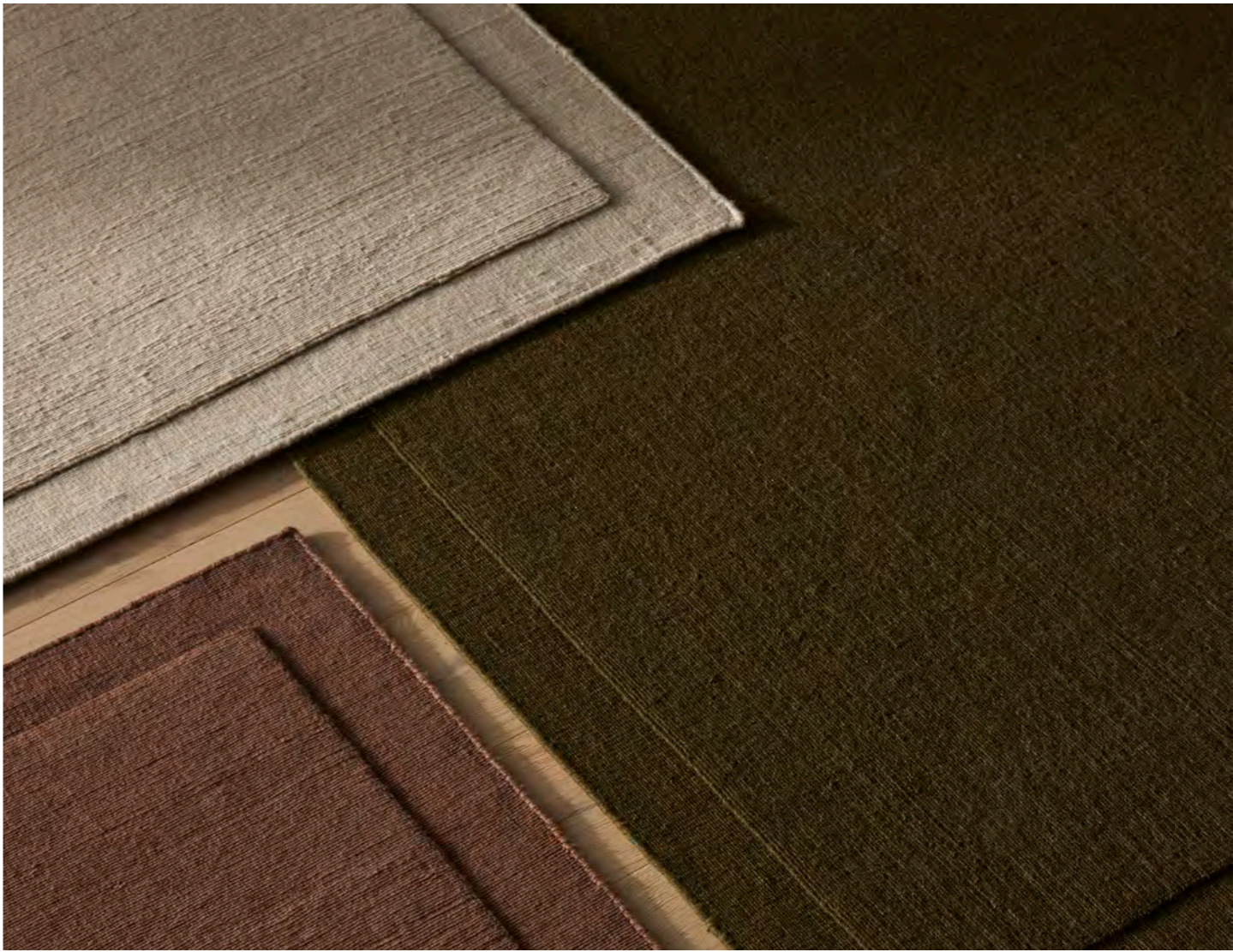
- 8-9 Fabien
- 10-11 Emilio
- 12-13 Alexandre
- 14-15 Marceau
- 16-17 Silvio
- 18 Travertine | Matisse
- 19 Glebe

TEXTURE RUGS

- 20-21 Kaia
- 22-23 Bastian
- 24-25 Puglia
- 26 Matterhorn
- 27 Andes
- 28 Zambesi
- 29 Suffolk
- 30 Henley
- 31 Lisbon | Umbra
- 32 Katari | Emerson
- 33 Denali

INFORMATION

- 34-35 Rug Care & Protection
- Size & Colour Tolerance
- Placement & Suitability
- Custom Rug Sizes
- Contact Details



CASSIO RUG

Contemporary loom knotted style
with wide recessed feature border

100% NZ Wool Pile

SUITABILITY

- General Living
- Bedroom
- Dining
- Entry | Hallway
- Kid Friendly



FOG
2m x 3m | 3m x 4m



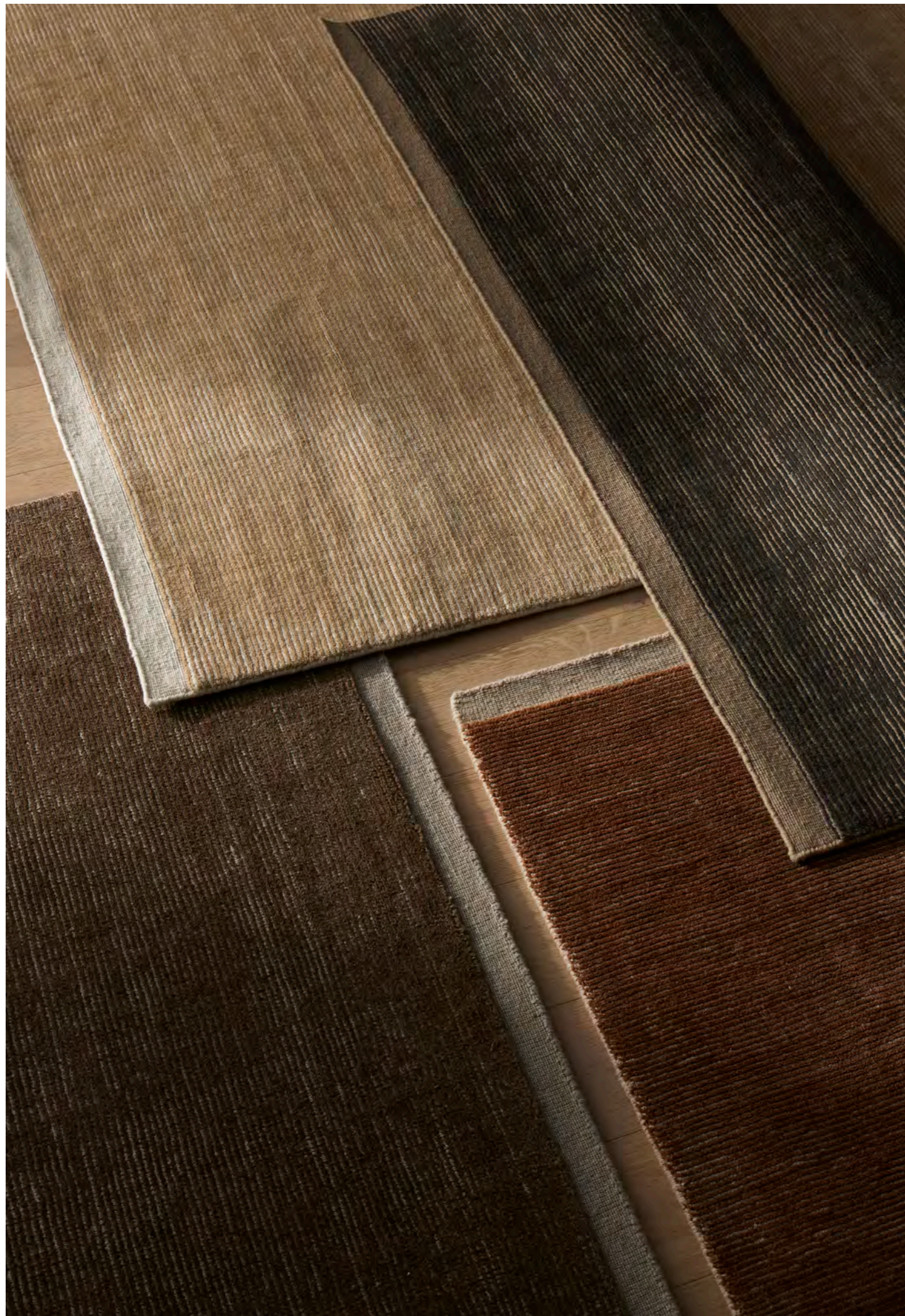
JASPER
2m x 3m | 3m x 4m



MULBERRY
2m x 3m | 3m x 4m



FUDGE
2m x 3m | 3m x 4m



TEXTURE



REMO RUG

Loom knotted tonal rib with contrast ends

100% NZ Wool Pile

SUITABILITY

General Living
Bedroom
Dining
Entry | Hallway



SAND
2m x 3m



AMBER
2m x 3m



EARTH
2m x 3m



MARINE
2m x 3m



CLASSIC



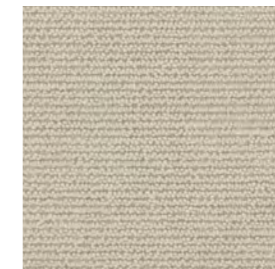
FABIEN RUG

Loom knotted with a textured rib weave and contrast cotton fringe

100% Wool Pile

SUITABILITY

General Living
Bedroom
Dining
Entry | Hallway



STONE

2m x 3m | 3m x 4m



NOMAD

2m x 3m | 3m x 4m



BARK

2m x 3m | 3m x 4m



ECHO

2m x 3m | 3m x 4m



MOSS

2m x 3m | 3m x 4m



EMBER

2m x 3m | 3m x 4m



EMILIO RUG

Hand woven with a tonal knotted fringe

100% Linen Pile

SUITABILITY

General Living
Bedroom



CANVAS
2m x 3m | 3m x 4m



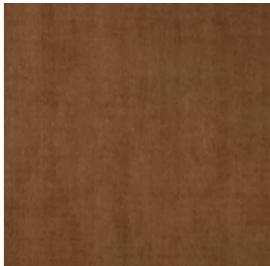
OYSTER
2m x 3m | 3m x 4m



FLINT
2m x 3m | 3m x 4m



KALE
2m x 3m | 3m x 4m



TOFFEE
2m x 3m | 3m x 4m



CLASSIC



ALESSANDRE RUG

Hand woven linear texture with contrasting cotton fringe

100% NZ Wool Pile

SUITABILITY

General Living
Bedroom
Dining
Entry | Hallway
Kid Friendly



SEASALT
2m x 3m



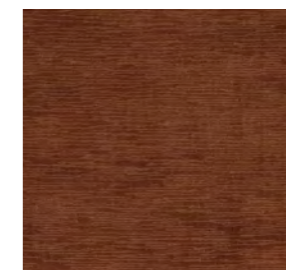
MINERAL
2m x 3m



TAUPE
2m x 3m



DUSK
2m x 3m



CLAY
2m x 3m



OAKMOSS
2m x 3m



CLASSIC

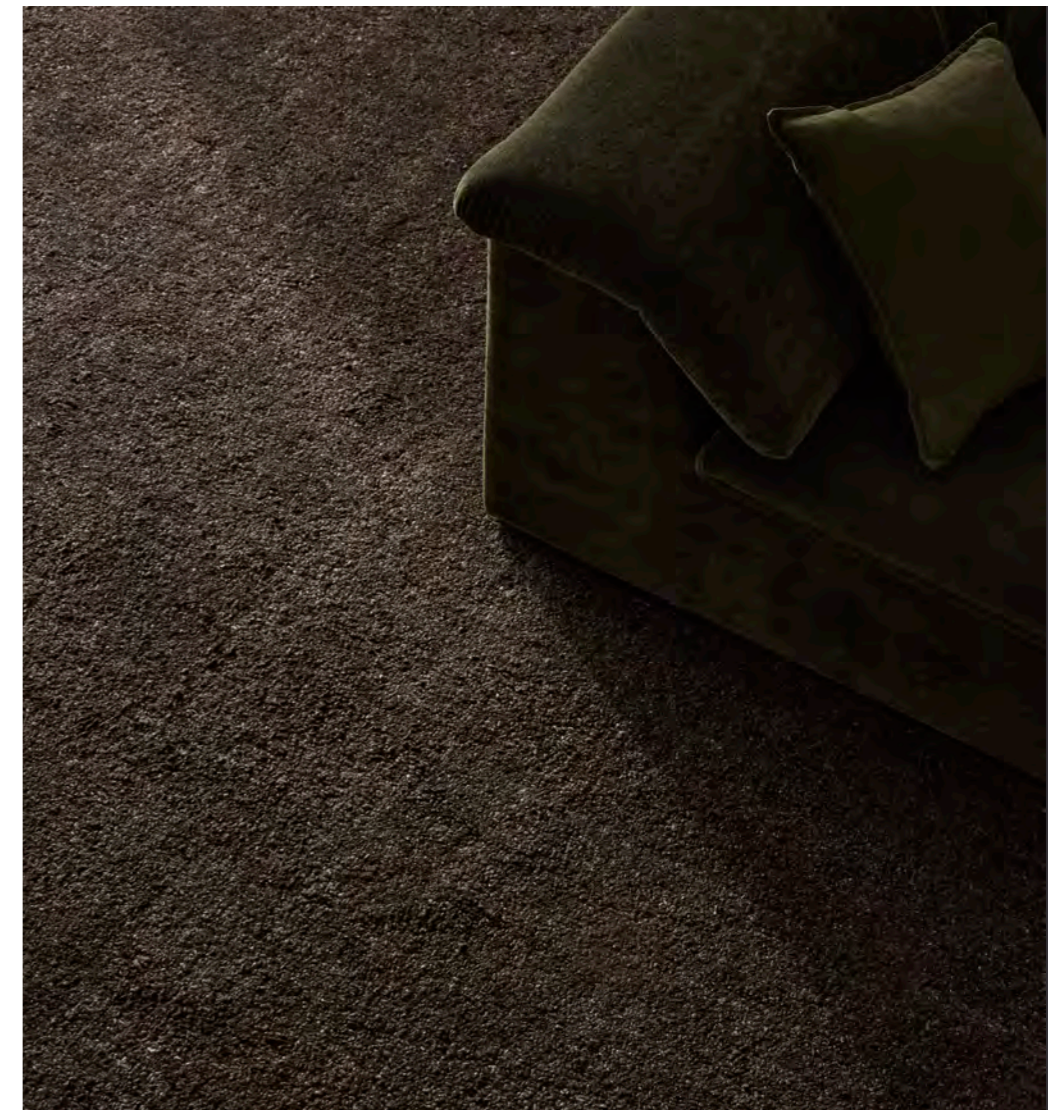
MARCEAU RUG

Loom knotted loop pile
with a bound edge

80% Wool 20% Polyester Pile

SUITABILITY

- General Living
- Bedroom
- Dining
- Entry | Hallway
- Kid Friendly



FOX
2m x 3m | 3m x 4m



TAUPE
2m x 3m | 3m x 4m



ANGORA
2m x 3m | 3m x 4m



SHALE
2m x 3m | 3m x 4m



CHOCOLATE ^(N)
2m x 3m | 3m x 4m



SILVIO RUG

Hand woven with a recessed end
feature and micro fringe

100% Wool Pile

SUITABILITY

Entry/Hallway
General Living
Dining
Kid Friendly



HEM AND
FRINGE DETAIL

CLASSIC



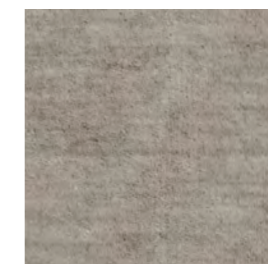
DIJON
2m x 3m | 3m x 4m



SIENNA
2m x 3m | 3m x 4m



DOVECOTE
2m x 3m | 3m x 4m



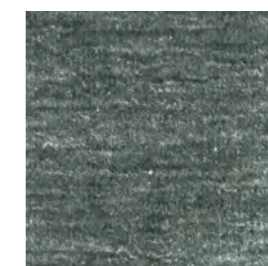
FLINT
2m x 3m | 3m x 4m



WALNUT
2m x 3m | 3m x 4m



ECRU
2m x 3m | 3m x 4m



FOG
2m x 3m | 3m x 4m



DUSK
2m x 3m | 3m x 4m



OAKMOSS
2m x 3m | 3m x 4m

CLASSIC



TRAVERTINE RUG

Loom knotted rib with feature end

90% Viscose 10% Wool Pile

SUITABILITY

Low Traffic Living
Bedroom



MARBLE
2m x 3m



PEWTER
2m x 3m



BUFF
2m x 3m



MATISSE RUG

Loom knotted textured plain

90% Viscose 10% Wool Pile

SUITABILITY

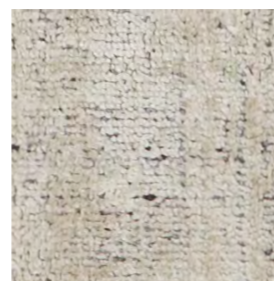
Low Traffic Living
Bedroom



MARBLE
2m x 3m

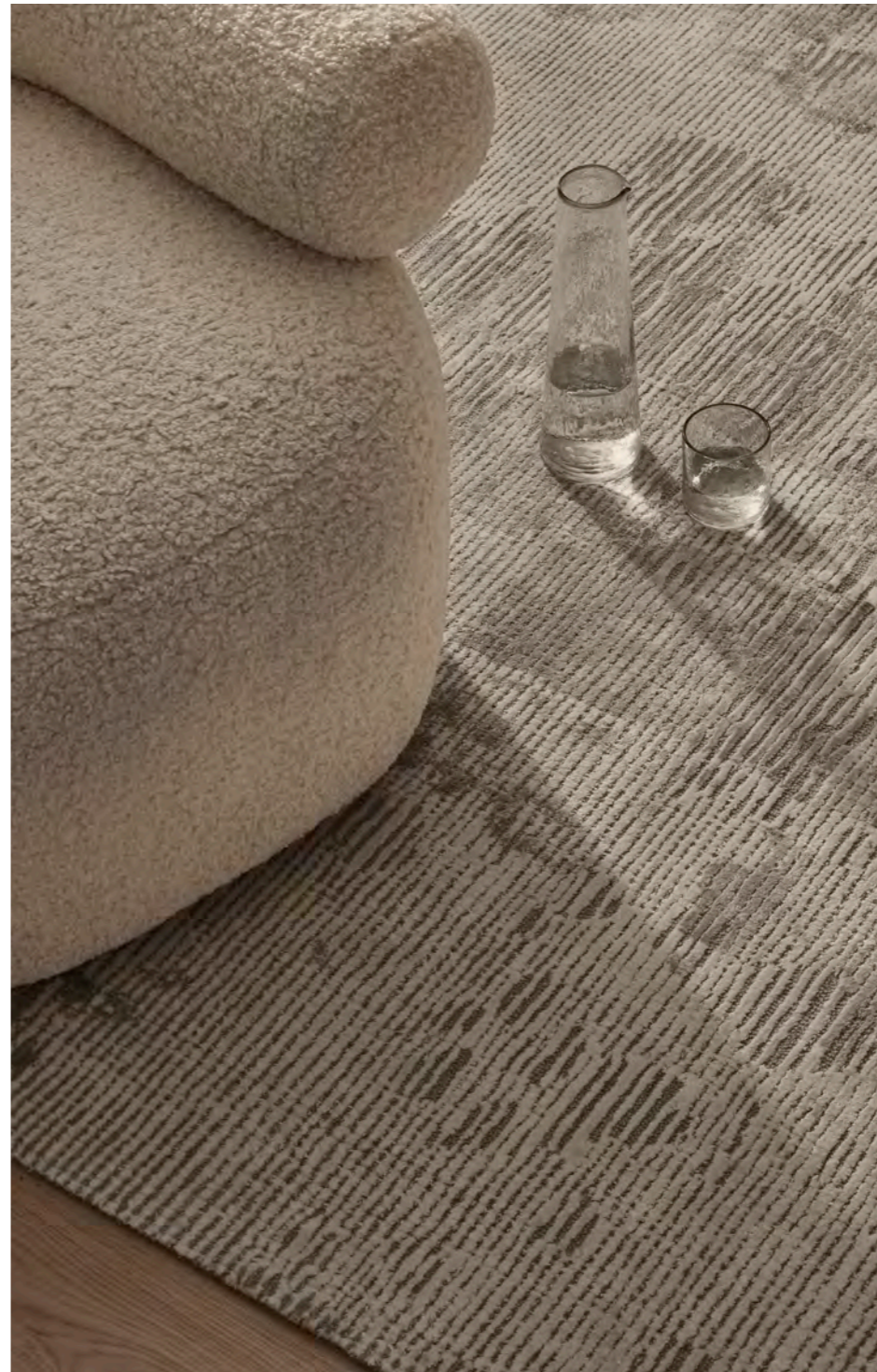


SHALE
2m x 3m



BUFF
2m x 3m

CLASSIC



GLEBE RUG

Handwoven with intentional,
irregular texture

60% Viscose 40% Wool Pile

SUITABILITY

Low Traffic Living
Bedroom
General Living



OAT
2m x 3m



SILVER
2m x 3m



SHADOW
2m x 3m



KAIA RUG

Contemporary hand tufted loop pile with a bound edge

100% NZ Wool Pile

SUITABILITY

- General Living
- Bedroom
- Dining
- Entry | Hallway
- Kid Friendly



MIST
2m x 3m



MOONBEAM
2m x 3m



MOCHA
2m x 3m



WILLOW
2m x 3m



TEXTURE

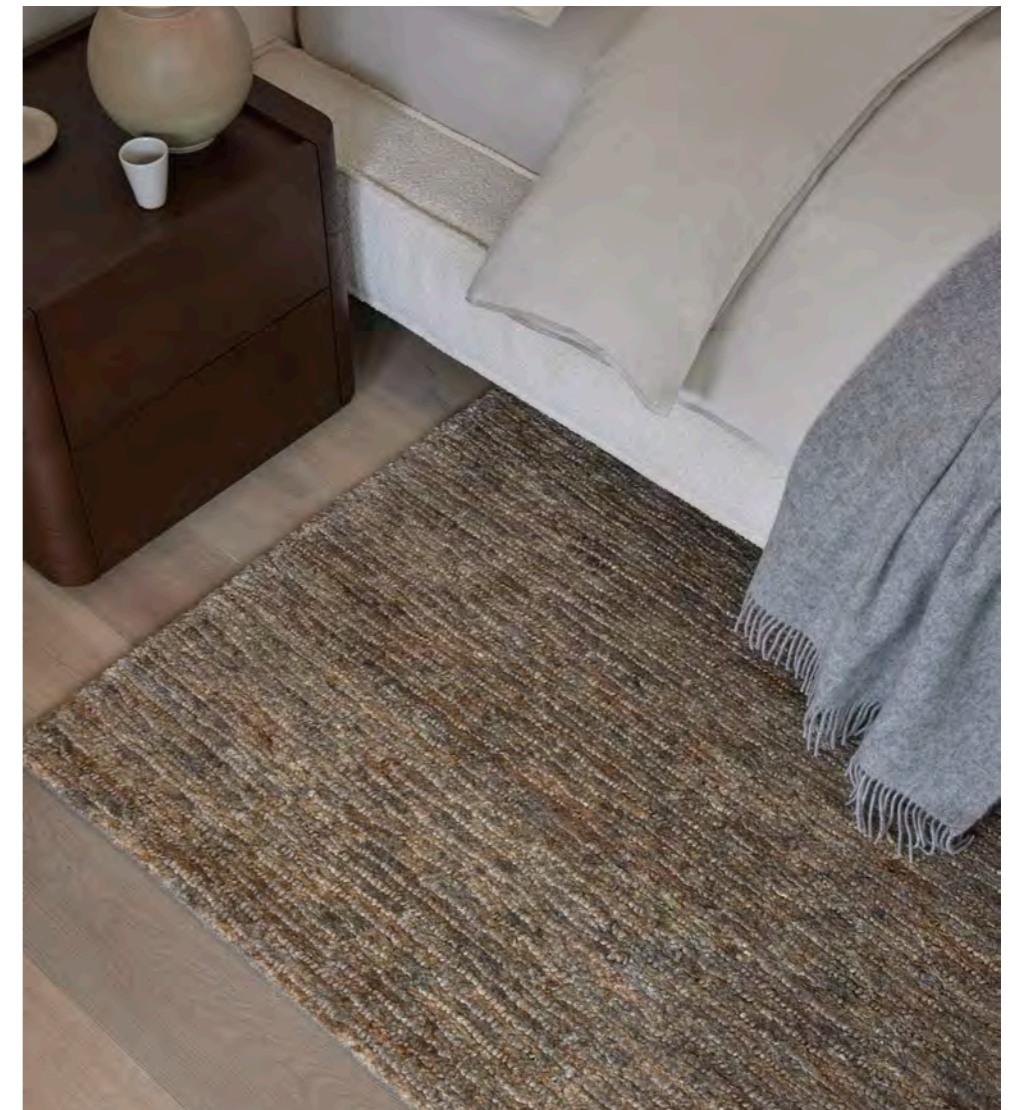
BASTIAN RUG

Loom knotted rib with bound edge

100% Jute Pile

SUITABILITY

- General Living
- Bedroom
- Dining
- Entry | Hallway
- Kid Friendly



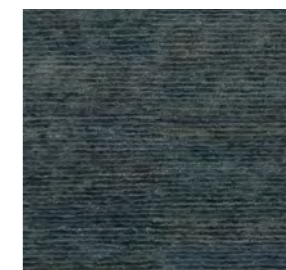
MACADAMIA
2m x 3m



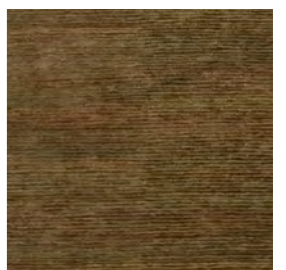
FOSSIL
2m x 3m



NATURAL
2m x 3m



DUSK
2m x 3m



OAKMOSS
2m x 3m



TEXTURE

PUGLIA RUG

Multi-tone chunky weave with fringe detail

Hand woven

70% Polyester 30% Wool Pile

SUITABILITY

General Living

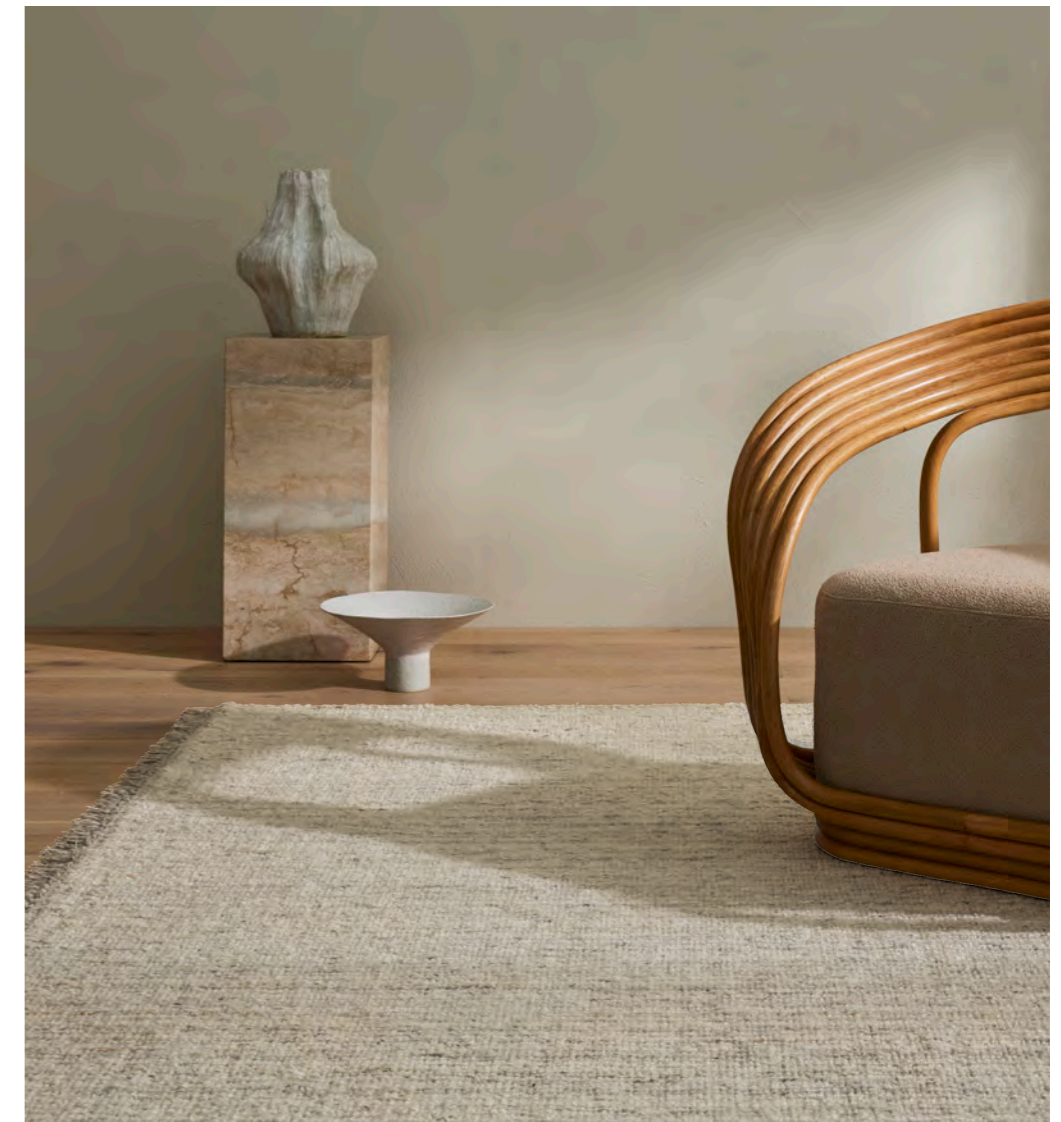
Dining

Bedroom

Kid Friendly



FRINGE DETAIL



FOX
2m x 3m



HEMP
2m x 3m



TAUPE
2m x 3m



FOSSIL
2m x 3m



PIGEON
2m x 3m



MATTERHORN RUG

Handwoven tonal chevron design

70% Wool 30% Cotton Pile

SUITABILITY

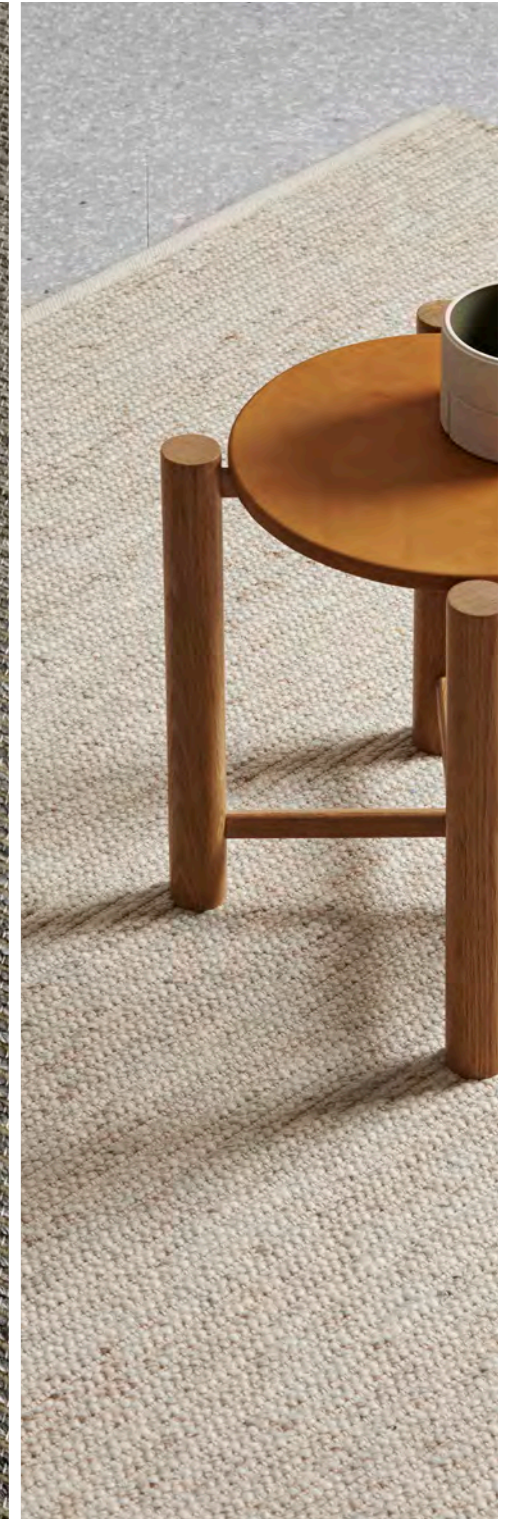
- General Living
- Dining
- Bedroom
- Kid Friendly
- Entry/Hallway



SEASALT
2m x 3m



TAR
2m x 3m



SANDSTORM
2m x 3m



FEATHER
2m x 3m

ANDES RUG

Handwoven duo-tone rib

50% Wool 50% Cotton Pile

SUITABILITY

- General Living
- Bedroom
- Kid Friendly
- Entry/Hallway



ZAMBESI RUG

Handwoven chevron duo-tone design

60% Wool 40% Viscose Pile

SUITABILITY

General Living
Bedroom



SANDSTORM

2m x 3m



FEATHER

2m x 3m



NATURAL

2m x 3m



MINERAL

2m x 3m



PEARL

2m x 3m

SUFFOLK RUG

Handwoven chunky braided stripe

100% Jute Pile

SUITABILITY

General Living
Dining
Bedroom
Kid Friendly
Entry/Hallway



HENLEY RUG

Loom knotted chunky boucle with tonal variation

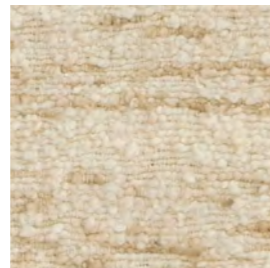
100% New Zealand Wool Pile

SUITABILITY

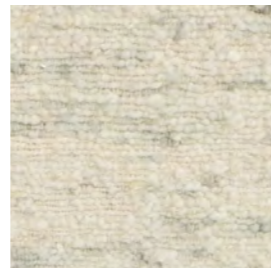
- Entry/Hallway
- General Living
- Dining
- Kid Friendly



NATURAL
2m x 3m

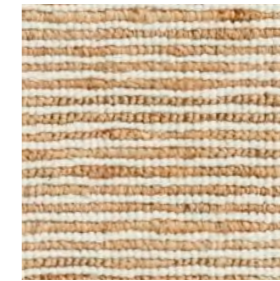


IVORY
2m x 3m



PELICAN
2m x 3m

PATTERN & TEXTURE



SEASALT
2m x 3m

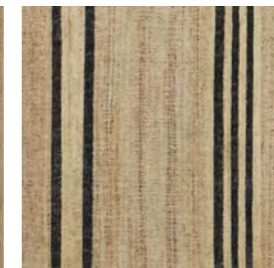
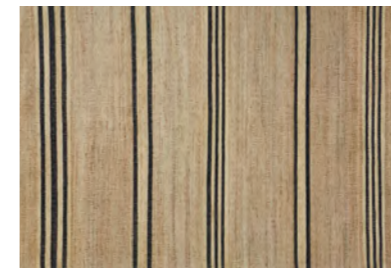
LISBON RUG

Handwoven duo-tone chunky stripe

50% Jute Pile 50% Wool Pile

SUITABILITY

- General Living
- Dining
- Bedroom
- Kid Friendly
- Entry/Hallway



NATURAL
2m x 3m

UMBRA RUG

Handwoven organic texture with feature stripe

100% Jute

SUITABILITY

- General Living
- Dining
- Bedroom
- Kid Friendly
- Entry/Hallway

PATTERN & TEXTURE



KATARI RUG

Loom knotted with a subtle flowing diamond design

70% Viscose 30% Wool Pile

SUITABILITY

Low Traffic Living
Bedroom



MOON
2m x 3m



EMERSON RUG

Handwoven chunky textured plain

60% Wool 40% Viscose

SUITABILITY

General Living
Bedroom

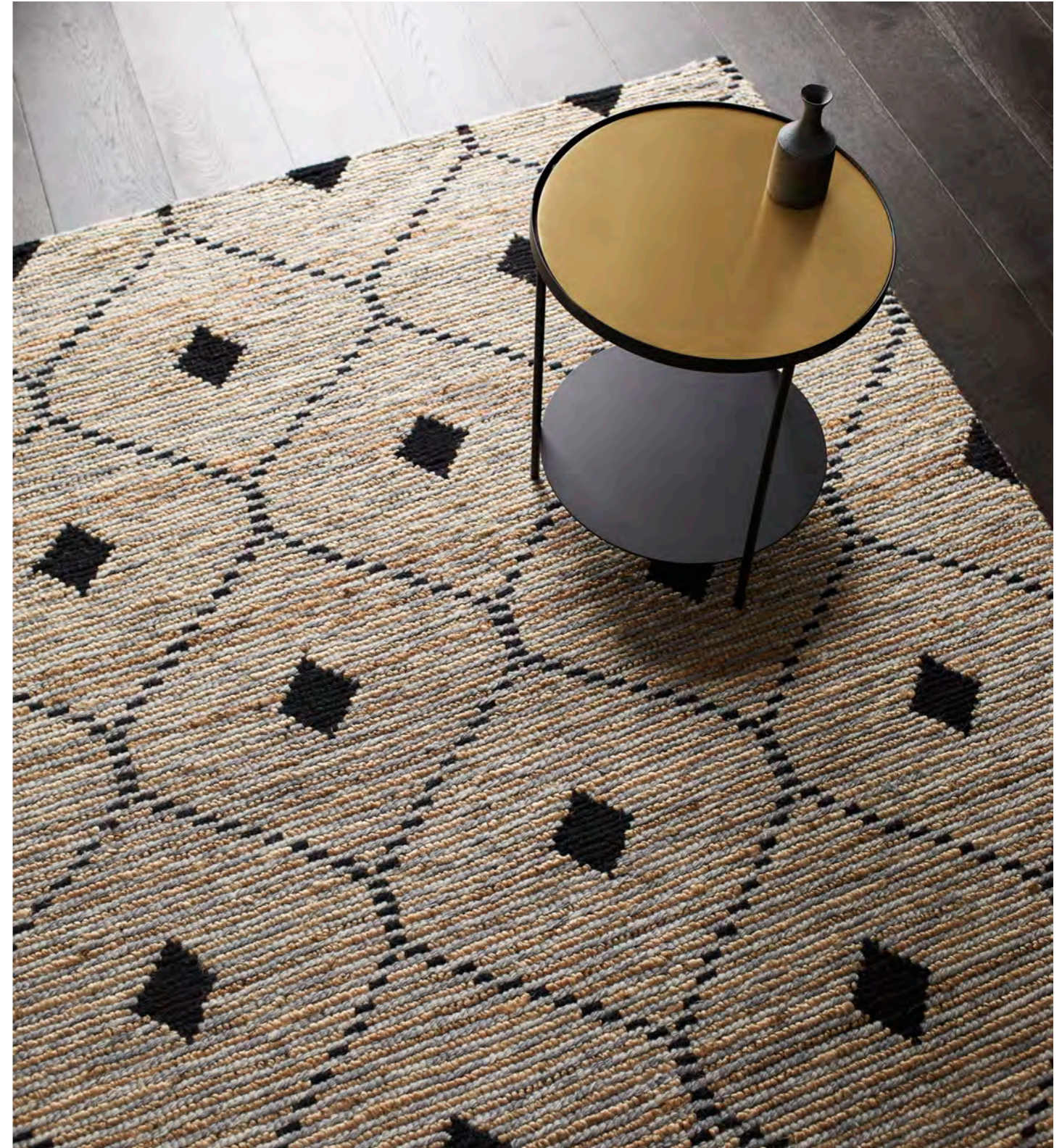


FEATHER
2m x 3m



SEASALT
2m x 3m

PATTERN & TEXTURE



DENALI RUG

Handwoven bold geometric

50% Jute 50% Wool Pile

SUITABILITY

General Living
Dining
Bedroom
Kid Friendly
Entry/Hallway



SANDSTORM
2m x 3m

THE WEAVE DIFFERENCE

All our rugs are either hand-tufted, hand-woven or hand-knotted on looms in northern India. Rugs have been woven in this area for generations using skills and techniques that have been handed down through artisan families.

For our indoor designs, we choose to use predominantly natural fibres for their beauty and longevity using materials such as wool, cotton, viscose, bamboo silk and jute.

Each of our hand-woven rugs has a unique beauty in their individuality and durability with a suitable backing for protection and secured edging to provide strength and stability, keeping each rug square and in shape.

We work closely with our suppliers to create premium products for our customers while ensuring positive outcomes for the local communities where they are made. We are proud members of Care & Fair, an international organisation that aims to eliminate illegal child labour in rug weaving areas. Our contributions help to improve the living standard of families and communities in these regions. All our rugs show the Care & Fair logo to indicate our commitment to this cause with a percentage of our sales contributing directly to this organisation.



GENERAL RUG CARE

It is best to vacuum your rug before any dirt is embedded, ideally twice a week in the first few months with low suction power. Dirt acts as an abrasive grit against the fibres, if not removed over time it will break down the fibres causing permanent damage.

All rugs made from natural fibres can result in shedding and pilling. This is a natural characteristic and the removal of any loose fibres can be rectified by regular vacuuming with a good quality vacuum cleaner using a flat head attachment to avoid agitating the fibres. Vacuum in one direction against the pile grain then repeat in the opposite direction to lift the pile and allow smoothing on the second pass. The amount a rug sheds or pills can alter due to traffic, moving furniture, vacuuming or other mechanical agitation.

Rugs should be regularly rotated to ensure even wear, especially where extended periods of sun exposure may cause fading. Rotate the rug as well as relocate items to avoid this.

Due to changes in pile and weave direction shading may occur, this is a natural characteristic of carpets and rugs.

Strands of fibre (pop ups) may work their way to the surface of the rug and is a normal occurrence as the fibres settle. Pop ups can either be trimmed or pushed through to the base of the rug. Never pull out these threads as this can create holes in the weave.

We recommend that indoor rugs are used with an underlay, this will help to prevent the risk of dye transfer to the undersurface, prevent severe rug movement and to help protect flooring.

SPILLS

Treat any spills immediately using a white micro-fibre cloth or paper towel. Press down onto the area to soak up the residue, DO NOT scrub as it may cause permanent pile damage. Use a natural fibre rug cleaner to help lift the stain. If the stain persists, contact a professional rug cleaner as soon as possible.

For detailed cleaning instructions, please visit our website.

RUG PROTECTION SYSTEM

At Weave, we proudly align with companies that have the same passion, drive and ethical standards in the product and service they offer. This is why we exclusively recommend Premium Surface Protection and their rug protection formulas MicroSeal & Fiber ProTector. They are experts in their field on all things relating to fibre and surface protection. Once you have purchased and received your Weave rug, we recommend you contact Premium Surface Protection directly for a free quote to treat your purchase so that your investment can continue looking like the day when you first unrolled it.

MicroSeal & Fiber ProTector are unique permanent solutions that combine protection against stains and damaging UVA and UVB rays. Additional benefits include anti-static characteristics, flame and fume retardants as well as eliminating mould, mildew and bacteria. Treated fibres are up to 60% more resistant to wear and abrasion because dirt/soiling must wear through the protective treatment before causing wear on the fibres themselves.

Contact Premium Surface Protection quoting WEAVEHOME for your free quote. All treatments provided by Premium Surface Protection also receive a free chamois sponge. Available nationally within Australia and New Zealand.

Australia:
premiumsurfaceprotection.com.au | 1800 189 907
info@premiumsurfaceprotection.com.au

New Zealand:
premiumsurfaceprotection.co.nz | (+64) 0800 001 069
info@premiumsurfaceprotection.co.nz

PRODUCT CHARACTERISTICS

Each Weave piece is custom made, meaning no two items will be the same. Irregularities in materials, fabrics or prints are a characteristic of the manufacturing process and are an integral part of the design. As such, there may be slight markings or variations in appearance (including colour, pattern, size or finishing) which are technically unavoidable and/or intentional.

RUG SIZE & COLOUR TOLERANCE

Our rugs are individually handmade and woven, as such size thickness and alignment can alter by +/- 5% from the dimensions ordered. We also make every effort to ensure there is minimal colour variation between sample and stocked, however due to the natural fibres, minor variations may occur to the characteristics in the manufacturing and dyeing of each type of fibre. +/- 5% is the standard tolerance for carpet colour variance.

CONTACT

WARWICK FABRICS NZ LTD
Web: weavehome.co.nz
Email: hello@weavehome.co.nz
Phone: 09 477 3080
@weavehomeNZ

WARWICK FABRICS AUSTRALIA PTY LTD
Web: weavehome.com.au
Email: hello@weavehome.com.au
Phone: 1300 787 888
@weavehomeau

CARE

Rug care instructions can be found on the underside of your rug at time of delivery. Copies of our current range care instructions and further care and maintenance can also be found at: weavehome.com.au and weavehome.co.nz.

Always refer to your care label before attempting ANY cleaning. Treat spills and stains as soon as possible to make stain removal easier and minimise the risk of permanent damage.

Our advice is given in good faith and should not be considered a guarantee. If in any doubt, always consult a professional cleaning company who have experience in rug cleaning.

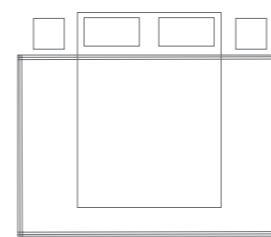
NOTE: Weave pieces are intended for interior use only unless stated as outdoor.

RUG PLACEMENT & SUITABILITY

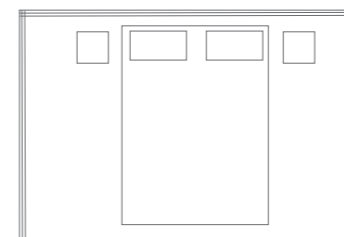
A well-proportioned rug can tie an entire room together, but it can be tricky to get the size and placement right for each individual space. A rug should be large enough to anchor your furniture whilst leaving some of the floor exposed. When in doubt, go for the biggest size possible. When choosing a rug, it pays to consider the area that the rug is for and determine the suitability based on the pile and fibre type. We have put together this guide for you to navigate this choice and select a rug that is perfect for your space – room by room.

Our suitability recommendations have also been highlighted next to each rug quality throughout this catalogue however we also recommend that all Weave rugs are treated by our partner Premium Surface Protection to ensure stain resistance and longevity.

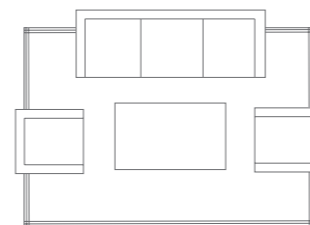
BEDROOM



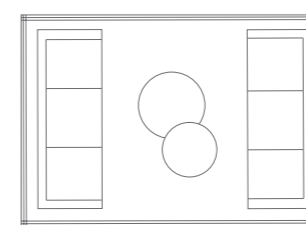
BEDROOM



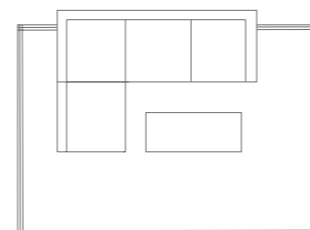
LIVING ROOM



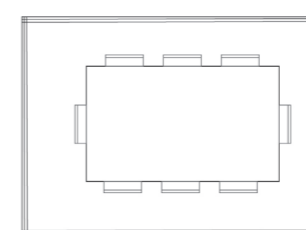
LIVING ROOM



LIVING ROOM



DINING ROOM



Bedroom

Bedrooms are an ideal space to add a rug to give a luxurious and warm feel to the room. Rugs in bedrooms are ideally placed under the bed to give a soft and cosy underfoot feel when getting in and out. A rug in your bedroom will also soften the space and provide a comforting layer of warmth. Generally, bedrooms are lower traffic areas that means rugs with higher pile or more delicate fibres are entirely suitable here.

Living Room

A rug in your living area will create a warm and inviting space, particularly if you have hard flooring. It will provide a visual anchor as well as add comfort and warmth for those that like to sit or play on the floor. Often it is wise to choose a rug first and then build the interior scheme around the colour and texture. For a living environment the best rugs will be warm and inviting – you can choose a plush and textured rug or flatter jute all dependent on the look and feel that you want. As furniture is not generally moved often in a living space – a higher pile or more decorative weave technique will be acceptable. But this really depends on your household and how the space is used.

Entrance | Hallway

When considering a rug for a hallway or entrance you must consider these spaces as higher traffic areas where people are generally wearing footwear. As well as being the area where outside foot traffic is often bringing the exterior in such as water and dirt. With this in mind – a harder wearing and lower pile rug is the best choice. A rug in these areas will also soften the sound of footsteps so adding a rug to your hallway will provide a sound barrier to the rooms off the hallway. We recommend our 100% jute or lower pile wool blends.

Dining Room

Dining areas tend to be higher traffic spaces with multiple chairs moving in and out regularly and an increase in spills and crumbs falling onto the rug. This is why we recommend avoiding a high pile rug here and suggest a flat weave instead. It is important to choose a rug size that will fit both the table and the chairs. Rugs that are too small can trip up the dining chairs when pulled out - not only does this become dangerous but also can damage the edges of the rug. You want to avoid a high pile or any rugs that have a raised or uneven weave technique for their crumb catching deep crevices. Jute and low pile wool blend rugs are the best choice for your dining area.

CUSTOM RUG SIZES

If we do not have a rug size that suits your needs, we offer a rug customisation service on most of our styles. To request a custom quote, email your request through to the Weave team at hello@weavehome.co.nz.

The following details must be submitted for a quote to be obtained;

- Customer Name
- Postal address (not PO BOX)
- Mobile number
- Email address
- Rug size
- Rug colour (can only be selected from each styles existing colour palette, custom colours are not available)
- Rug style

CATALOGUE COLOUR REFERENCE

Please note all photography in this catalogue is intended as a visual representation only. Although care is taken to ensure images are not misrepresented, colours are not exact matches due to variance in printer standards and monitor calibration.

