

# WARWICK

## FEBRUARY RELEASE LOOK BOOK

2025







The image shows a close-up of three decorative pillows resting against a white, paneled headboard. The pillows feature intricate, organic patterns in shades of beige, cream, and light brown. One pillow has a repeating leaf-like motif, while the others have more abstract, flowing designs. To the left, a portion of a blue and white striped curtain is visible. The scene is set on a light-colored, textured rug.

# TRADITION TRANSFORMED, A REINTERPRETATION OF PATTERN WITH AN ORGANIC APPEAL

Evoking the effortless style, relaxed luxury and rich, earthy texture of the Mediterranean, Manacor is a collection that harmonises pattern techniques and styles that are centuries old in a modernised interpretation. From block printing to ogee, trailing florals and stripes, Manacor takes the traditional and celebrates its appeal with a contemporary perspective.

CRISTO | ESIDORA | MANACOR | MARCEL | MORLANDA | RAYA







CRISTO



FCRN1ASHH



FCRN1BLOS



FCRN1H0NE



FCRN1INKK



FCRN1SEAF



FCRN1STON

SPECIFICATIONS			COLOUR CODE
DESIGN	USAGE	COMPOSITION	AUS / NZ
CRISTO (Manacor Collection)	Drapery / General Domestic	85% Cotton / 15% Linen	BL / BL



CURATE



NATURALLY



ESIDORA



FESD1ASHH



FESD1BL0SS



FESD1H0NE



FESD1INKK



FESD1SEAF



FESD1ST0N

SPECIFICATIONS			COLOUR CODE
DESIGN	USAGE	COMPOSITION	AUS / NZ
ESIDORA (Manacor Collection)	Drapery / General Domestic	85% Cotton / 15% Linen	BL / BL



CURATE



NATURALLY



MANACOR



FMAY1ASHH



FMAY1BLOS



FMAY1H0NE



FMAY1INKK



FMAY1SEAF



FMAY1STON

SPECIFICATIONS			COLOUR CODE
DESIGN	USAGE	COMPOSITION	AUS / NZ
MANACOR (Manacor Collection)	Drapery / General Domestic	85% Cotton / 15% Linen	BL / BL



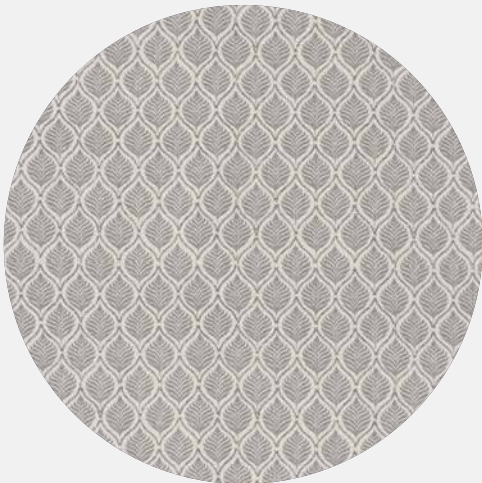
CURATE



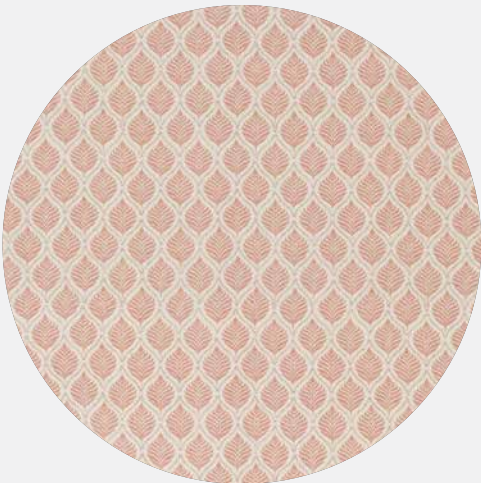
NATURALLY



MARCEL



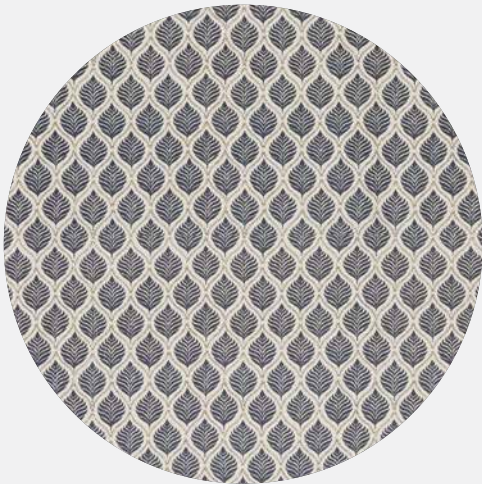
FMRG1ASHH



FMRG1BLOS



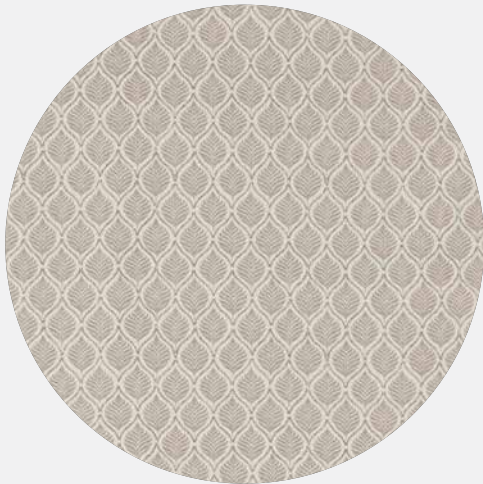
FMRG1HONE



FMRG1INKK



FMRG1SEAF



FMRG1STON

SPECIFICATIONS			COLOUR CODE
DESIGN	USAGE	COMPOSITION	AUS / NZ
MARCEL (Manacor Collection)	Drapery / General Domestic	85% Cotton / 15% Linen	BL / BL

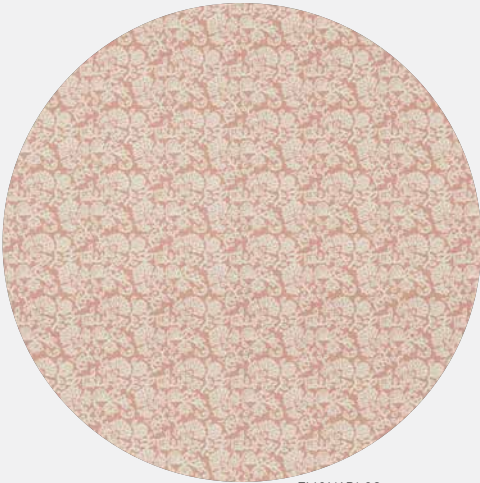




MORLANDA



FM0N1ASHH



FM0N1BL0S



FM0N1H0NE



FM0N1INKK



FM0N1SEAF



FM0N1ST0N

SPECIFICATIONS			COLOUR CODE
DESIGN	USAGE	COMPOSITION	AUS / NZ
MORLANDA (Manacor Collection)	Drapery / General Domestic	85% Cotton / 15% Linen	BL / BL



CURATE



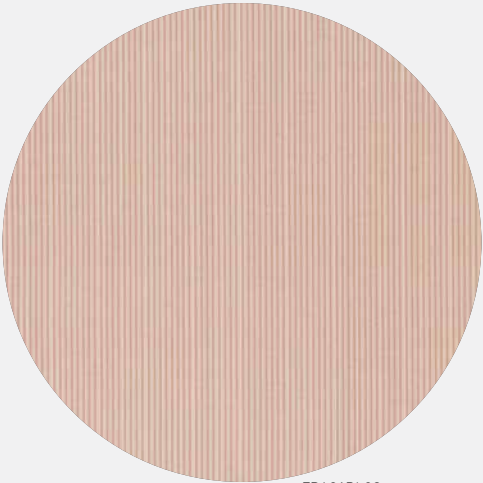
NATURALLY



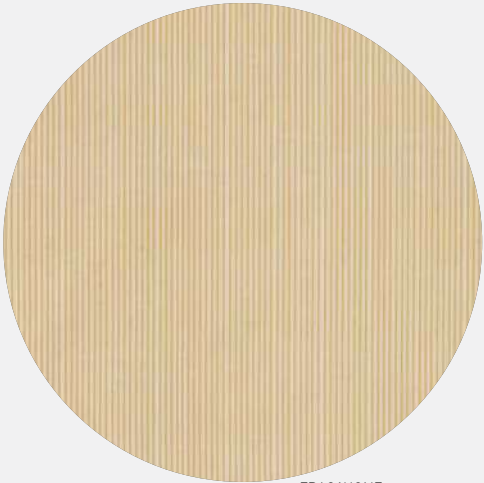
RAYA



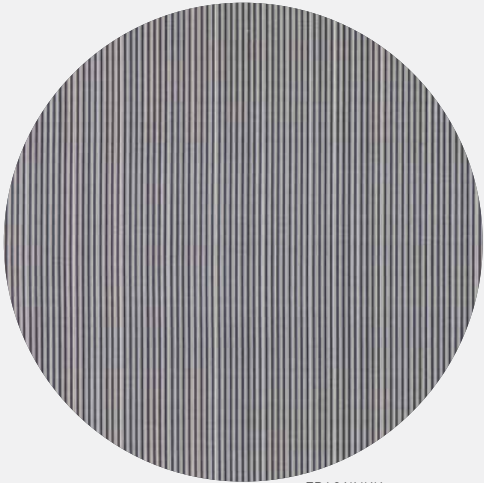
FRAC1ASHH



FRAC1BL0S



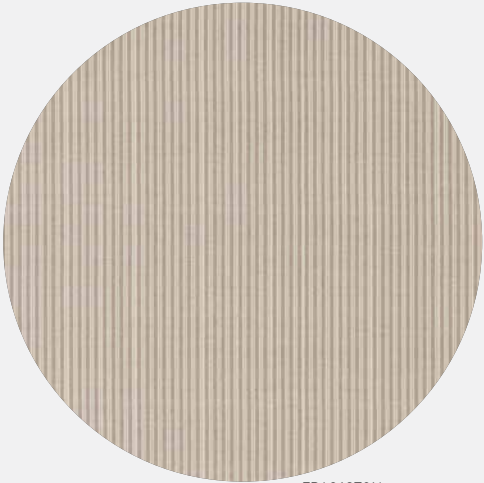
FRAC1H0NE



FRAC1INKK



FRAC1SEAF



FRAC1ST0N

SPECIFICATIONS			COLOUR CODE
DESIGN	USAGE	COMPOSITION	AUS / NZ
RAYA (Manacor Collection)	Drapery / General Domestic	85% Cotton / 15% Linen	BL / BL



CURATE



NATURALLY



CASABLANCA 





# UNVEILING A PRIMAL IMPRESSION WHERE ORIGINS AND ARTISTRY CONVERGE

Seamlessly intertwining the elemental power of primal art with the structured elegance of geometric design, CASABLANCA re-imagines ancient creativity through a contemporary lens. Marrying the bold, instinctual marks of early human expression with sleek, modernised tactility. A dynamic blend of timeless tradition and new-age style.

CASABLANCA | PALACIO



CASABLANCA



FCA99BARK



FCA99EMER



FCA99GREY



FCA99IVOR



FCA99NAVY



FCA99PICK



FCA99PLUM



FCA99TAUP



FCA99TERR

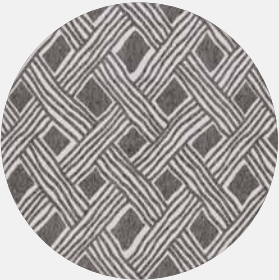
PALACIO



FPA99BARK



FPA99EMER



FPA99GREY



FPA99IVOR



FPA99NAVY



FPA99PICK



FPA99PLUM



FPA99TAUP



FPA99TERR

SPECIFICATIONS			COLOUR CODE	FR AS 1530.3 INDEX RESULTS			
DESIGN	USAGE	COMPOSITION	AUS / NZ	IGNITABILITY	SPREAD OF FLAME	HEAT EVOLVED	SMOKE DEVELOPED
CASABLANCA PALACIO	Heavy Commercial 40,000 Martindale	100% Polyester	Y / G	11	0	1	5



STANDARD 100




FIRE RATED









A close-up photograph of a patterned curtain tied with a thick rope, hanging from a wooden chair back. The curtain features a repeating floral or leaf pattern in shades of beige and brown. The rope is a light cream color and is knotted in a complex, multi-loop fashion. The wooden chair back is made of a light-colored wood with a smooth finish. The background is softly blurred, showing more of the curtain and the chair.

# FROM HERITAGE TO HOME, WOVEN FOR MODERN LIVING

Blending the elegance of timeless design with a contemporary sensibility where tradition is honoured yet crafted with a fresh perspective. FREYA brings the beauty of the past into the present with a versatility that's needed for modern-day spaces, capturing an historical elegance that is subtle and composed.

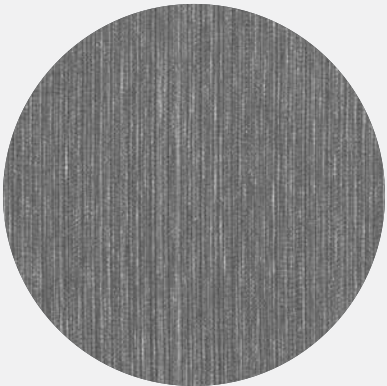
ANGUS | EVELYN | FREYA | ISABELLA



ANGUS



FAN04ALAB



FAN04CHAR



FAN04GOLD



FAN04INKK



FAN04LAUR



FAN04PEAR



FAN04ROSE



FAN04SILV

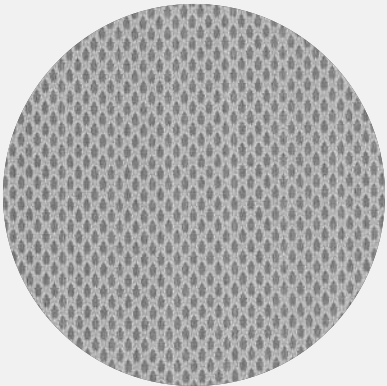
SPECIFICATIONS			COLOUR CODE
DESIGN	USAGE	COMPOSITION	AUS
ANGUS (Freya Collection)	Drapery / General Domestic	55% Cotton 42% Polyester 3% Linen	Y



EVELYN



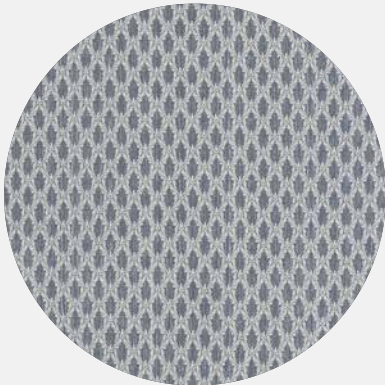
FEV02ALAB



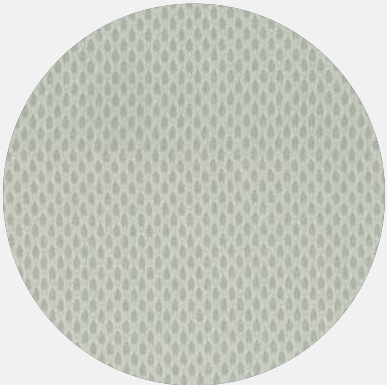
FEV02CHAR



FEV02GOLD



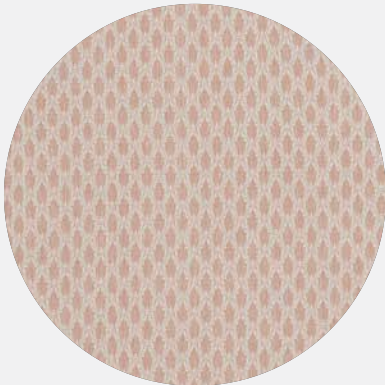
FEV02INKK



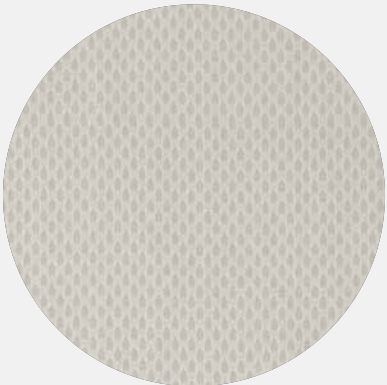
FEV02LAUR



FEV02PEAR



FEV02ROSE



FEV02SILV

SPECIFICATIONS			COLOUR CODE
DESIGN	USAGE	COMPOSITION	AUS
EVELYN (Freya Collection)	Drapery / General Domestic	55% Cotton 42% Polyester 3% Linen	γ



STANDARD 100



FREYA



FFR04ALAB



FFR04CHAR



FFR04GOLD



FFR04INKK



FFR04LAUR



FFR04PEAR



FFR04ROSE



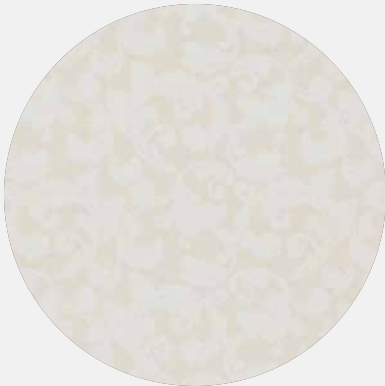
FFR04SILV

SPECIFICATIONS			COLOUR CODE
DESIGN	USAGE	COMPOSITION	AUS
FREYA (Freya Collection)	Drapery / General Domestic	55% Cotton 42% Polyester 3% Linen	Y



STANDARD 100

ISABELLA



FIS02ALAB



FIS02CHAR



FIS02GOLD



FIS02INKK



FIS02LAUR



FIS02PEAR



FIS02ROSE



FIS02SILV

SPECIFICATIONS			COLOUR CODE
DESIGN	USAGE	COMPOSITION	AUS
ISABELLA (Freya Collection)	Drapery / General Domestic	55% Cotton 42% Polyester 3% Linen	Y











# A JOURNEY THROUGH TIME WHERE IMPERIAL JUNGLE MEETS CONTEMPORARY DESIGN

Masterfully blending the opulence of imperial jungle with a revival of ancient tapestry, intricate textures and geometrics. DESA combines the past with a modernised grandeur that compliments a contemporary vision with a tactile sophistication.

**DESA | HALSTON | KALI | MONGOLIA | NARLA | ULUWATU**



DESA



FDE22MIDN



FDE22NATU



FDE22TERR



SPECIFICATIONS			COLOUR CODE
DESIGN	USAGE	COMPOSITION	AUS / NZ
DESA (Desa Collection)	Heavy Commercial 100,000 Martindale	41% Organic Cotton 31% Cotton 28% Viscose	R8 / R8





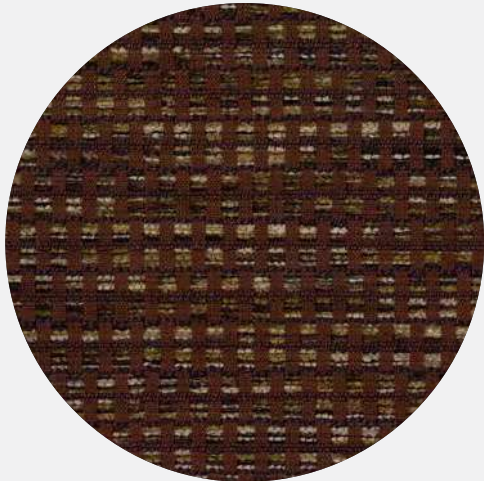
KALI



FKA23MIDN



FKA23NATU



FKA23TERR



SPECIFICATIONS			COLOUR CODE	FR AS 1530.3 INDEX RESULTS			
DESIGN	USAGE	COMPOSITION	AUS / NZ	IGNITABILITY	SPREAD OF FLAME	HEAT EVOLVED	SMOKE DEVELOPED
KALI [Desa Collection]	Heavy Commercial 50,000 Martindale	100% Polyester	R8 / R8	12	0	2	6



STANDARD 100





ULUWATU



FUL22MIDN



FUL22NATU



FUL22TERR



SPECIFICATIONS			COLOUR CODE	FR AS 1530.3 INDEX RESULTS			
DESIGN	USAGE	COMPOSITION	AUS / NZ	IGNITABILITY	SPREAD OF FLAME	HEAT EVOLVED	SMOKE DEVELOPED
ULUWATU (Desa Collection)	Heavy Commercial 50,000 Martindale	100% Polyester	R8 / R8	10	0	1	5



STANDARD 100



FIRE RATED





MONGOLIA



FM023MIDN



FM023NATU



FM023TERR



SPECIFICATIONS			COLOUR CODE
DESIGN	USAGE	COMPOSITION	AUS / NZ
MONGOLIA (Desa Collection)	General Domestic	80% Polyester 20% Cotton	R8 / R8





HALSTON



FHA22CHOC



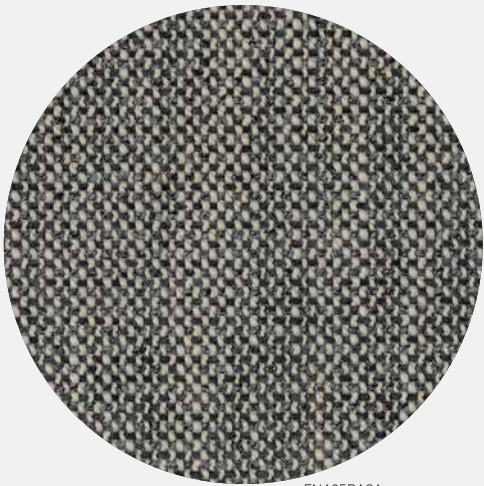
FHA22RUST



FHA22EBON

SPECIFICATIONS			COLOUR CODE	FR AS 1530.3 INDEX RESULTS				NOTE
DESIGN	USAGE	COMPOSITION	AUS / NZ	IGNITABILITY	SPREAD OF FLAME	HEAT EVOLVED	SMOKE DEVELOPED	More colours available
HALSTON (Desa Collection)	Drapery / Heavy Commercial 120,000 Martindale	100% Recycled Polyester	BK / R1	0	0	0	6	

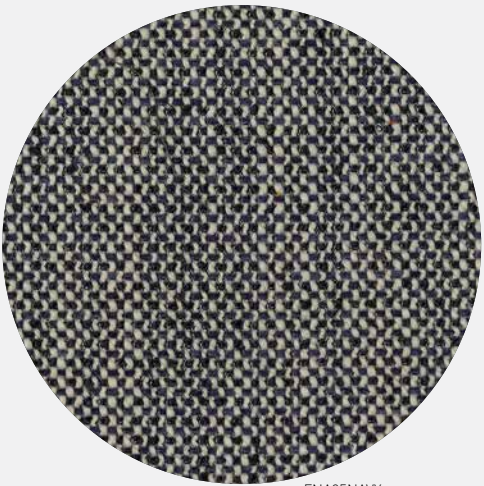
NARLA



FNA05BASA



FNA05UMBE



FNA05NAVY

SPECIFICATIONS			COLOUR CODE	FR AS 1530.3 INDEX RESULTS				NOTE
DESIGN	USAGE	COMPOSITION	AUS / NZ	IGNITABILITY	SPREAD OF FLAME	HEAT EVOLVED	SMOKE DEVELOPED	More colours available
NARLA (Desa Collection)	Heavy Commercial 131,000 Martindale	97% Polyester 3% Acrylic	G / G	12	0	3	5	





CERVO 





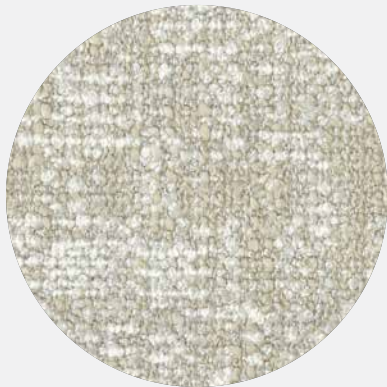
# EVOKING EXTRAORDINARY TEXTURE

The CERVO collection takes you on a journey of richly woven history echoing the past and re-threading it for the future.

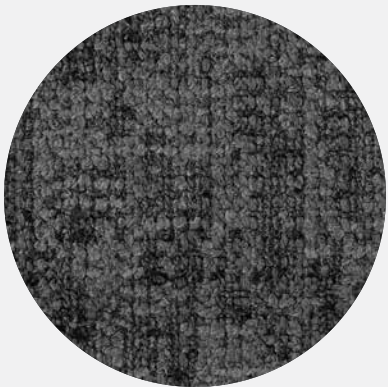
DUBROVNIK | HVAR | MAJORCA | POZZALLO | SALINA | TIBER | ZAGREB



DUBROVNIK



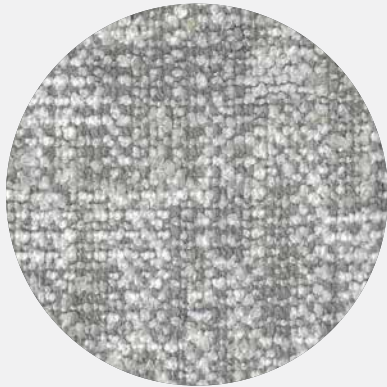
FDU33BONE



FDU33DENI



FDU33EUCA



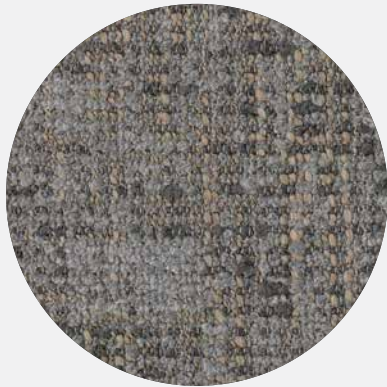
FDU33ICEE



FDU33MIDN



FDU33MOCH



FDU33SLAT



FDU33SNOW



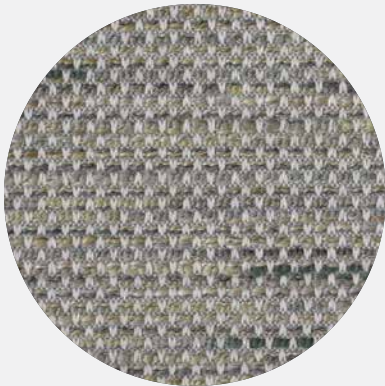
FDU33TAUP

SPECIFICATIONS			COLOUR CODE	FR AS 1530.3 INDEX RESULTS			
DESIGN	USAGE	COMPOSITION	AUS / NZ	IGNITABILITY	SPREAD OF FLAME	HEAT EVOLVED	SMOKE DEVELOPED
DUBROVNIK [Cervo Collection]	Heavy Domestic / General Commercial	32% Recycled Olefin 18% Recycled Polyester 47% Acrylic 3% Polyester	R5 / R	17	0	3	4

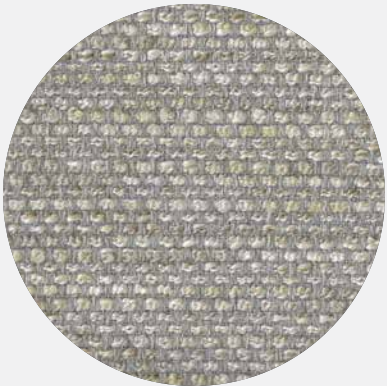




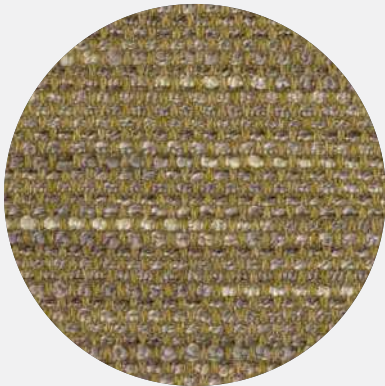
HVAR



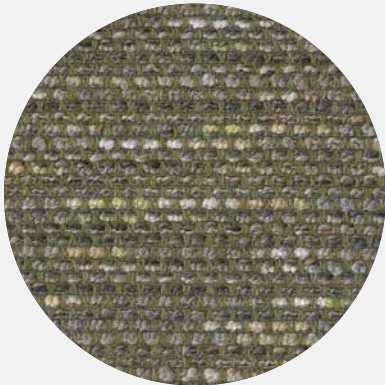
FHV33DUSK



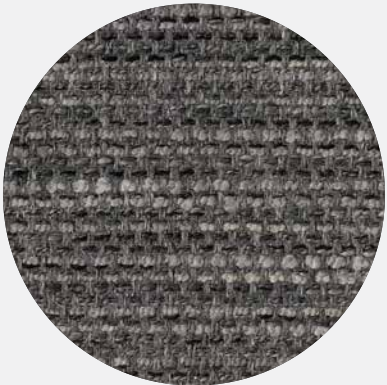
FHV33GLAC



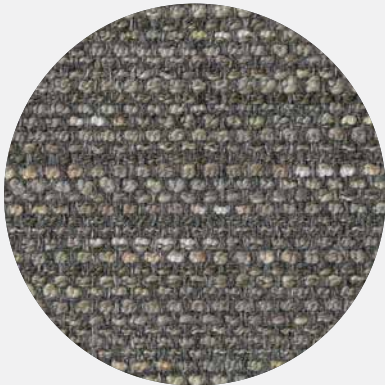
FHV33GOLD



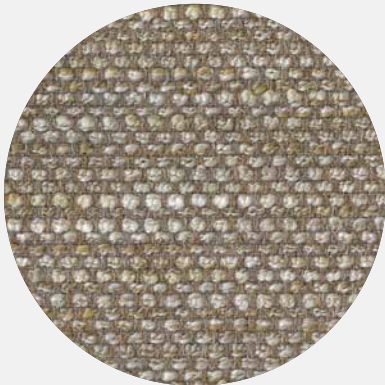
FHV33OLIV



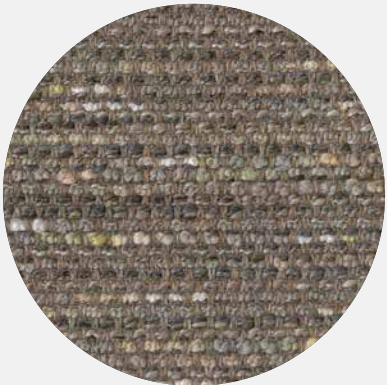
FHV33SLAT



FHV33STEE



FHV33STON



FHV33TAUP



FHV33TUSK

SPECIFICATIONS			COLOUR CODE	FR AS 1530.3 INDEX RESULTS			
DESIGN	USAGE	COMPOSITION	AUS / NZ	IGNITABILITY	SPREAD OF FLAME	HEAT EVOLVED	SMOKE DEVELOPED
HVAR [Cervo Collection]	Heavy Domestic / General Commercial	53% Recycled Olefin 43% Acrylic 4% Polyester	R5 / R	15	0	1	3





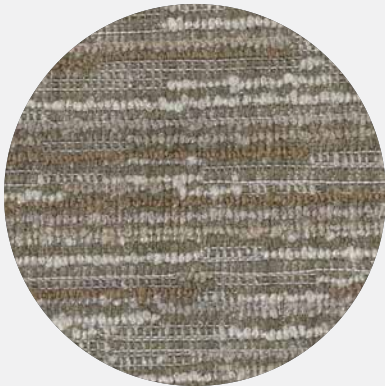
MAJORCA



FMJ33BONE



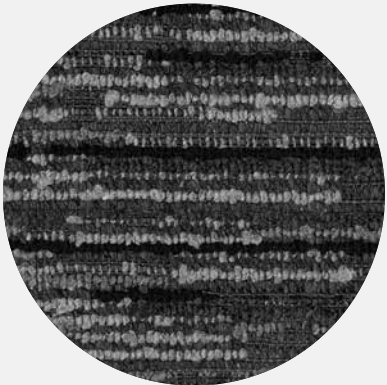
FMJ33DUSK



FMJ33EUC



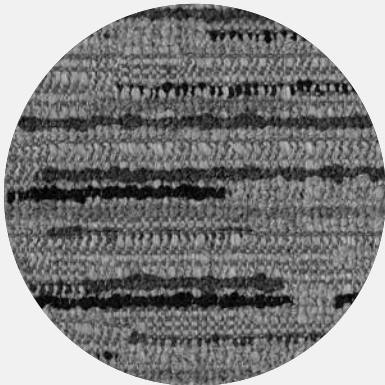
FMJ33ICE



FMJ33MIDN



FMJ33MOCH



FMJ33SLAT



FMJ33SNOW



FMJ33STON

SPECIFICATIONS			COLOUR CODE	FR AS 1530.3 INDEX RESULTS			
DESIGN	USAGE	COMPOSITION	AUS / NZ	IGNITABILITY	SPREAD OF FLAME	HEAT EVOLVED	SMOKE DEVELOPED
MAJORCA (Cervo Collection)	Heavy Domestic / General Commercial	66% Acrylic 22% Polyester 12% Recycled Olefin	R5 / R	17	0	3	4

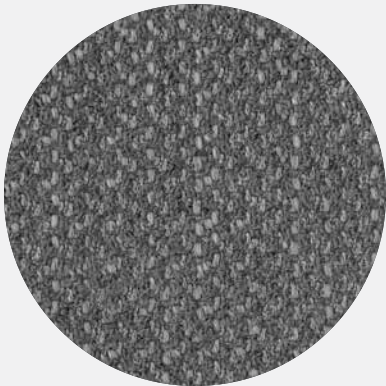




POZZALLO



FP033BIEG



FP033DENI



FP033FAWN



FP033GOLD



FP033ICEE



FP033MIDN



FP033NAVY



FP033STON



FP033TAUP

SPECIFICATIONS			COLOUR CODE	FR AS 1530.3 INDEX RESULTS			
DESIGN	USAGE	COMPOSITION	AUS / NZ	IGNITABILITY	SPREAD OF FLAME	HEAT EVOLVED	SMOKE DEVELOPED
POZZALLO [Cervo Collection]	Heavy Domestic / General Commercial	61% Acrylic 24% Polyester 15% Recycled Olefin	R5 / R	14	0	2	4





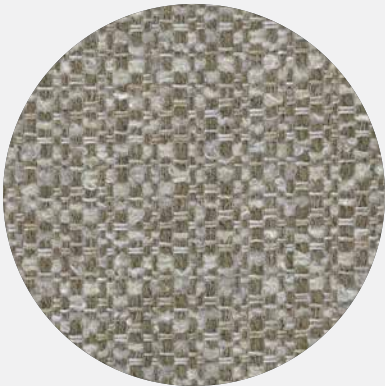
SALINA



FSA33BLUE



FSA33BONE



FSA33EUCA



FSA33ICEE



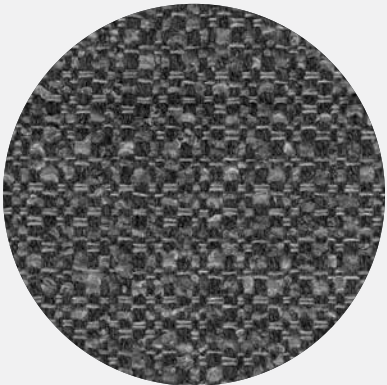
FSA33IVOR



FSA33MARI



FSA33MIDN



FSA33SLAT



FSA33TAUP

SPECIFICATIONS			COLOUR CODE	FR AS 1530.3 INDEX RESULTS			
DESIGN	USAGE	COMPOSITION	AUS / NZ	IGNITABILITY	SPREAD OF FLAME	HEAT EVOLVED	SMOKE DEVELOPED
SALINA (Cervo Collection)	Heavy Commercial 50,500 Martindale	60% Recycled Olefin 20% Polyester 20% Acrylic	R5 / R	16	0	2	3





TIBER



FTI33DENI



FTI33EART



FTI33ICEE



FTI33LINE



FTI33MIDN



FTI33SAND



FTI33SLAT



FTI33SNOW



FTI33SPRU

SPECIFICATIONS			COLOUR CODE	FR AS 1530.3 INDEX RESULTS			
DESIGN	USAGE	COMPOSITION	AUS / NZ	IGNITABILITY	SPREAD OF FLAME	HEAT EVOLVED	SMOKE DEVELOPED
Tiber [Cervo Collection]	Heavy Domestic / General Commercial	44% Acrylic 18% Recycled Poly 18% Recycled Olefin 13% Viscose 5% Linen 2% Poly	R5 / R	16	0	2	3





ZAGREB



FZA33BARK



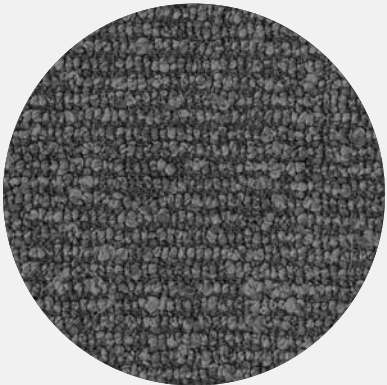
FZA33BONE



FZA33GLAC



FZA33MIDN



FZA33SLAT



FZA33SNOW



FZA33STEE



FZA33STON



FZA33TAUP

SPECIFICATIONS			COLOUR CODE	FR AS 1530.3 INDEX RESULTS			
DESIGN	USAGE	COMPOSITION	AUS / NZ	IGNITABILITY	SPREAD OF FLAME	HEAT EVOLVED	SMOKE DEVELOPED
ZAGREB [Cervo Collection]	Heavy Commercial 100,000 Martindale	38% Recycled Polyester 25% Polyester 23% Acrylic 14% Recycled Olefin	R5 / R	13	0	3	5







# INSPIRED BY LIGHT, ILLUMINATING MODERN LIVING

Invoking the joy of sun-kissed shores, island breezes and exotic florals, ALOHA is a holiday passport ready to be filled with beautiful tropical memories.

**TAORMINA**



TAORMINA



FTA04CHAL



FTA04CLOD



FTA04DENI



FTA04GRAP



FTA04IVOR



FTA04LINE



FTA04ONYX



FTA04POWD



FTA04QUAR



FTA04SAGE



FTA04SILV



FTA04SLAT



FTA04SMOK



FTA04SNOW

SPECIFICATIONS			COLOUR CODE	FR AS 1530.3 INDEX RESULTS *1530.2 refer web			
DESIGN	USAGE	COMPOSITION	AUS / NZ	IGNITABILITY	SPREAD OF FLAME	HEAT EVOLVED	SMOKE DEVELOPED
TAORMINA	Drapery	100% Polyester	Y / Y	0	0	0	1







# MAKING A MESH STATEMENT WITH INDUSTRIAL GLAMOUR

CYPRUS brings light, lustre, and luxury with a refined brilliance that is alluring and practical.

**CYPRUS**

CYPRUS



FCY22BRON



FCY22DIAM



FCY22GOLD



FCY22META



FCY22SILV



FCY22ZINC

SPECIFICATIONS			COLOUR CODE	FR AS 1530.3 INDEX RESULTS *1530.2 refer web			
DESIGN	USAGE	COMPOSITION	AUS / NZ	IGNITABILITY	SPREAD OF FLAME	HEAT EVOLVED	SMOKE DEVELOPED
CYPRUS	Drapery	100% Polyester	Y / G	0	0	0	0-1



SELF-WEIGHTED



SHEER SCALE THREE



FIRE RATED



STANDARD 100



CONTINUOUS





# INSPIRED LIVING BEGINS WITH RECYCLED BEAUTY

Designed with conscious living in mind, combining an environmentally friendly composition with a beautifully constructed weave, embodying timeless simplicity and harmony with natural surroundings.

**PATIO**

PATIO



FPA33ASHH



FPA33BLUS



FPA33CHAR



FPA33IVOR



FPA33LAUR



FPA33OLIV



FPA33PLAT



FPA33SAND



FPA33SILV



FPA33SMOK



FPA33VANI



FPA33WHEA

SPECIFICATIONS			COLOUR CODE	FR AS 1530.3 INDEX RESULTS *1530.2 refer web			
DESIGN	USAGE	COMPOSITION	AUS / NZ	IGNITABILITY	SPREAD OF FLAME	HEAT EVOLVED	SMOKE DEVELOPED
PATIO	Drapery	100% Recycled Polyester	0 / 0	0	0	0	0-1







BABYLON W



# UNLEASHING CHARM WITH COLOUR AND TEXTURE

A multi-tone plain, high performance fabric, uniquely accentuated by the use of texture and colour, it transforms the boucle trend into a commercially accessible solution that draws attention while maintaining formality. BABYLON has an underlying sense of nostalgia where a subtle mid-century flair is flexed into it's modernised design.

**BABYLON**



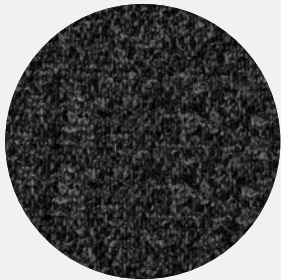
BABYLON



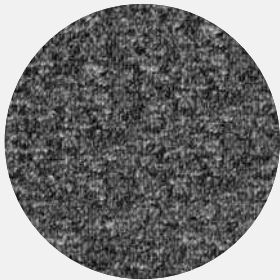
FBA33BERR



FBA33BLUS



FBA33COAL



FBA33GREY



FBA33INKK



FBA33IVOR



FBA33LINE



FBA33MOSS



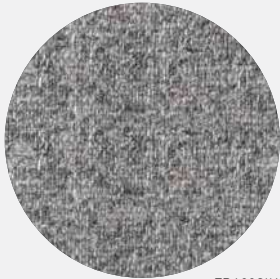
FBA33OCEA



FBA33PICK



FBA33SEAG



FBA33SILV



FBA33TAUP



FBA33TERR



FBA33WHEA

SPECIFICATIONS			COLOUR CODE	FR 1530.3 INDEX RESULTS			
DESIGN	USAGE	COMPOSITION	AUS / NZ	IGNITABILITY	SPREAD OF FLAME	HEAT EVOLVED	SMOKE DEVELOPED
BABYLON	Heavy Commercial 40,000 Martindale	61% Acrylic 3% Polyester 36% Recycled Polypropylene	BK / R1	16	0	2	3









# DREAM WEAVES WITH A PLUSH THROWBACK BEAT

DION evokes nostalgia where it blends the bold energy of the past with contemporary comfort and style. Connecting both luxury and vintage charm, it symbolises status, artistry and individualism.

**DION**



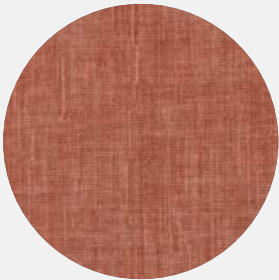
DION



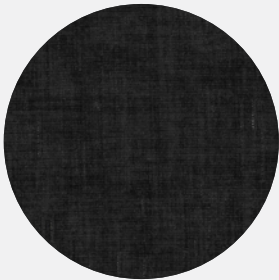
FDI02ACAC



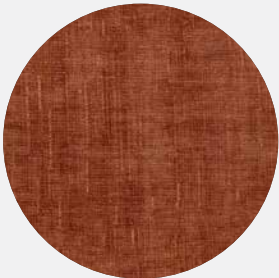
FDI02AMET



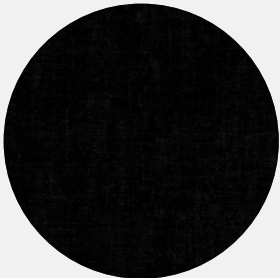
FDI02BLOS



FDI02CHAR



FDI02CLAY



FDI02EBON



FDI02FORE



FDI02FROS



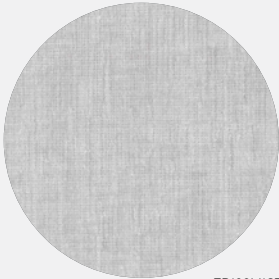
FDI02IVOR



FDI02KHAK



FDI02MANU



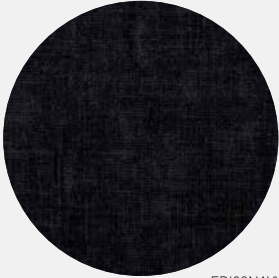
FDI02MIST



FDI02MOCH



FDI02NATU



FDI02NAVY



FDI02OLIV

SPECIFICATIONS			COLOUR CODE	FR 1530.3 INDEX RESULTS			
DESIGN	USAGE	COMPOSITION	AUS / NZ	IGNITABILITY	SPREAD OF FLAME	HEAT EVOLVED	SMOKE DEVELOPED
DION	Heavy Commercial 40,000 Martindale	100% Polyester	Y / Y	11	0	1	5





DION



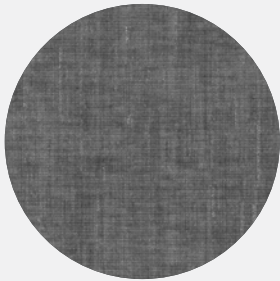
FDI02ORCH



FDI02ROUG



FDI02SHEL



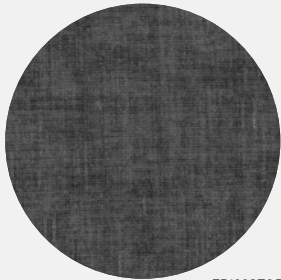
FDI02SILV



FDI02SKYY



FDI02SNOW



FDI02STOR



FDI02TAUP



FDI02TEAL

SPECIFICATIONS			COLOUR CODE	FR 1530.3 INDEX RESULTS			
DESIGN	USAGE	COMPOSITION	AUS / NZ	IGNITABILITY	SPREAD OF FLAME	HEAT EVOLVED	SMOKE DEVELOPED
DION	Heavy Commercial 40,000 Martindale	100% Polyester	Y / Y	11	0	1	5





HALSTON W



# RECYCLED VELVET, A NEW ERA OF SENSORY SOPHISTICATION

Unveiling an evolved velvet with a rich, refined and recycled sophistication, born from a mindful approach to modern design and curated to inspire, HALSTON is a new chapter in velvet elegance where luxury meets innovation with its timeless texture and beautifully soft comfort.

**HALSTON**



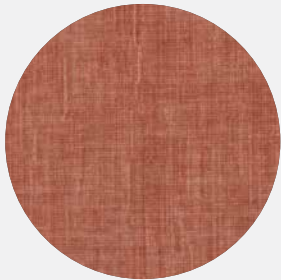
HALSTON



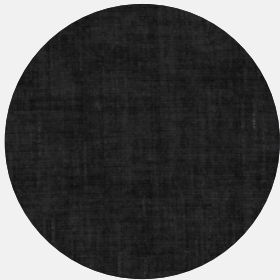
FDI02ACAC



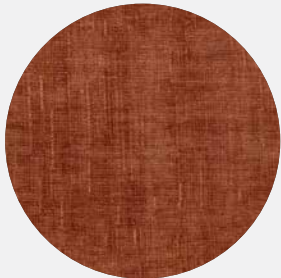
FDI02AMET



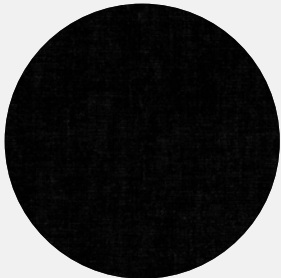
FDI02BLOS



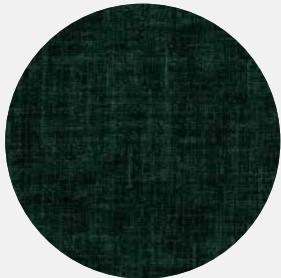
FDI02CHAR



FDI02CLAY



FDI02EBON



FDI02FORE



FDI02FROS



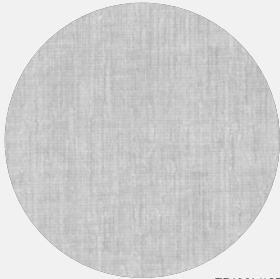
FDI02IVOR



FDI02KHAK



FDI02MANU



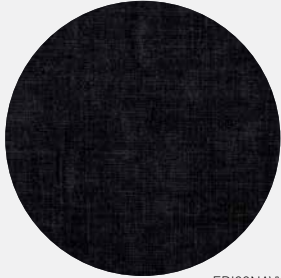
FDI02MIST



FDI02MOCH



FDI02NATU



FDI02NAVY



FDI02OLIV

SPECIFICATIONS			COLOUR CODE	FR 1530.3 INDEX RESULTS			
DESIGN	USAGE	COMPOSITION	AUS / NZ	IGNITABILITY	SPREAD OF FLAME	HEAT EVOLVED	SMOKE DEVELOPED
HALSTON	Drapery/Heavy Commercial 150,000 Martindale	100% Recycled Polyester	BK / R1	0	0	1	6





HALSTON



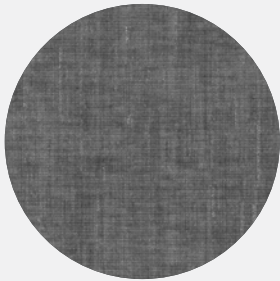
FDI020RCH



FDI02ROUG



FDI02SHEL



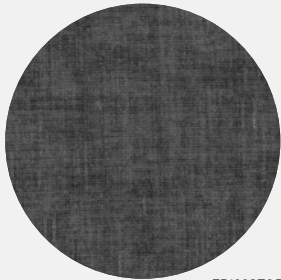
FDI02SILV



FDI02SKYY



FDI02SNOW



FDI02STOR



FDI02TAUP



FDI02TEAL

SPECIFICATIONS			COLOUR CODE	FR 1530.3 INDEX RESULTS			
DESIGN	USAGE	COMPOSITION	AUS / NZ	IGNITABILITY	SPREAD OF FLAME	HEAT EVOLVED	SMOKE DEVELOPED
HALSTON	Drapery/Heavy Commercial 150,000 Martindale	100% Recycled Polyester	BK / R1	0	0	1	6







JEFFERSON W



# WHERE TEXTURE AND TACTILITY TAKE THE LEAD

Built from the rich terrain of varying colours and fibres, JEFFERSON combines natural inspiration with thoughtful craftsmanship, offering an understandable and timeless solution, designed to endure both trend and time.

JEFFERSON



JEFFERSON



FJE22BARK



FJE22BISC



FJE22BLUS



FJE22CACA



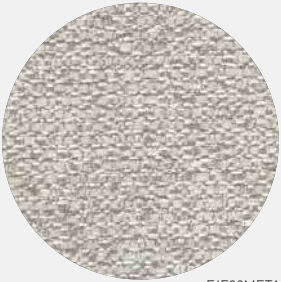
FJE22COAL



FJE22FORE



FJE22GOLD



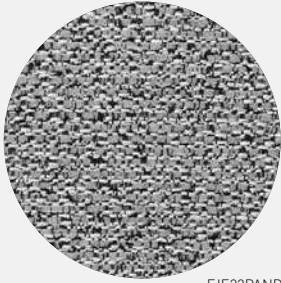
FJE22META



FJE22MOCH



FJE22NAVY



FJE22PAND



FJE22SILV



FJE22SNOW



FJE22TEAL



FJE22TERR



FJE22TUSK



FJE22WHEA

SPECIFICATIONS			COLOUR CODE	FR 1530.3 INDEX RESULTS			
DESIGN	USAGE	COMPOSITION	AUS / NZ	IGNITABILITY	SPREAD OF FLAME	HEAT EVOLVED	SMOKE DEVELOPED
JEFFERSON	Heavy Commercial 150,000 Martindale	100% Polyester	Y / Y	11	0	1	5





# L I N I A

FEBRUARY RELEASE LOOK BOOK



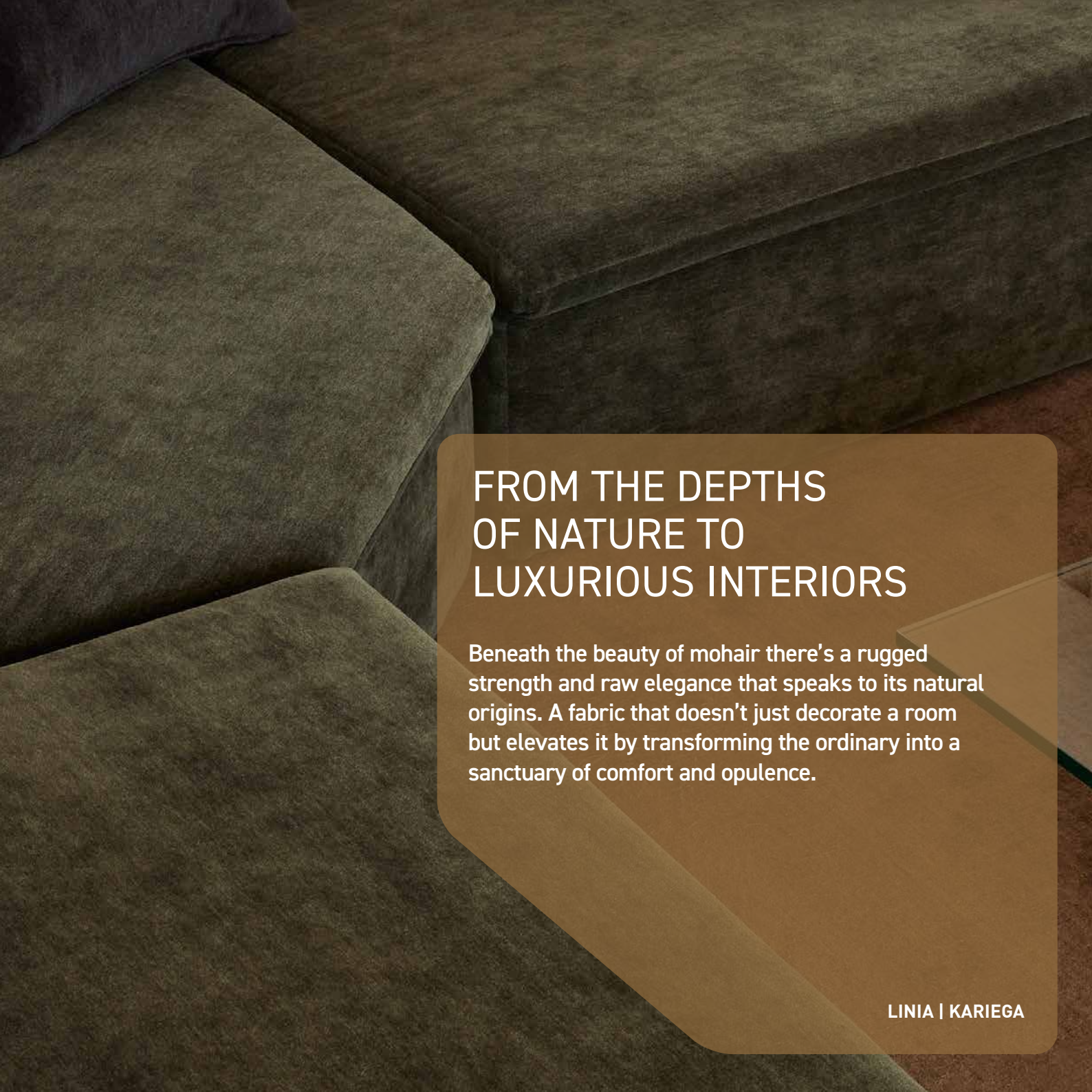




KARIEGA







## FROM THE DEPTHS OF NATURE TO LUXURIOUS INTERIORS

Beneath the beauty of mohair there's a rugged strength and raw elegance that speaks to its natural origins. A fabric that doesn't just decorate a room but elevates it by transforming the ordinary into a sanctuary of comfort and opulence.

LINIA | KARIEGA





LINIA | KARIEGA



KARIEGA



FKA22BLAC



FKA22CHAR



FKA22CHOC



FKA22FORE



FKA22GRAS



FKA22GREY



FKA22INKK



FKA22MAHO



FKA22MAUV



DESIGN	USAGE	COMPOSITION	FR AS 1530.3	
KARIEGA	Heavy Commercial (119,000)	50% Mohair Wool 50% Acrylic	Ignitability 13	Spread of Flame 0
			Heat Evolved 2	Smoke Developed 5



KARIEGA



FKA22NATU



FKA22OCHR



FKA22OLIV



FKA22PLUM



FKA22SILV



FKA22TAUP



FKA22TERR



FKA22TUME



COMMERCIAL HEAVY & RESIDENTIAL  
FOR KITCHEN & BATH DRAPES  
UNITED STATES

MEET MEET COMMERCIAL USE

DESIGN	USAGE	COMPOSITION	FR AS 1530.3	
KARIEGA	Heavy Commercial (119,000)	50% Mohair Wool 50% Acrylic	Ignitability 13	Spread of Flame 0
			Heat Evolved 2	Smoke Developed 5



**Australia**  
T 1300 787 888  
[www.warwick.com.au](http://www.warwick.com.au)

**Dubai**  
T +9714 454 1336  
[www.warwick.com.au](http://www.warwick.com.au)

**India**  
T +91 99879 11409  
[www.warwickindia.co.in](http://www.warwickindia.co.in)

**New Zealand**  
T +64 (0) 9 477 3080  
[www.warwick.co.nz](http://www.warwick.co.nz)

**United Kingdom**  
T +44 (0) 1451 822 383  
[www.warwick.co.uk](http://www.warwick.co.uk)

