




Collection(s)	Babylon
Colour(s)	Berry, Blush, Coal, Grey, Ink, Ivory, Linen, Moss, Ocean, Pickle, Seaglass, Silver, Taupe, Terra, Wheat
Product Type(s)	Upholstery (Heavy Commercial)
Attributes	Halo Easy Care, Oekotex Standard 100
Styles	Plain, Texture, Contemporary, Urban, Modern
Composition	61% Acrylic 3% Polyester 36% Recycled Olefin
Pattern Match	No
Pattern Repeat (cm)	Plain
Railroaded	Plain Fabrics marked Railroaded 'Plain' can be cut in either direction at the discretion of the manufacturer, and in consultation with the customer's preference. Fabric is sampled in the direction it comes up the roll (Non Railroaded).
Width (cm)	140
Roll Size (approx)	50m
Weight (gsm)	425
Origin	Non European
Stain Repellent	No
FIAA Care Label	<a href="#">FIAA Care Label 3 - Non Pile Fabrics</a>
Usage	<div><div>Upholstery</div><div>Cushion</div><div>Lamp Shade</div></div>
Guarantee	3 Years in accordance with our product type and care instructions

Test Results

Martindale (ISO 12947, 12kPA)	100,000 Cycles
Seam Slippage (mm) (ISO 13936-2, Load 180)	Warp 3.0, Weft 4.0
Pilling Resistance (ISO 12945-2)	4
Colourfastness to Light Xenon arc (ISO 105-B02, blue std 6)	6
Colourfastness to Rubbing (ISO 105-X12)	Dry 4/5, Wet 4/5
Free and Hydrolysed Formaldehyde (ISO 14184-1:1998)	Not Detectable
Flammability AS/NZS 1530.3 - 1999 Ignitability (0-20) Spread of Flame (0-10) Heat Involved (0-10) Smoke Developed (0-10)	16 0 2 3
Oekotex Standard 100	1505024 CENTEXBEL



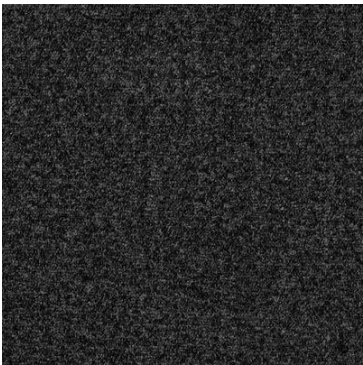
# Babylon



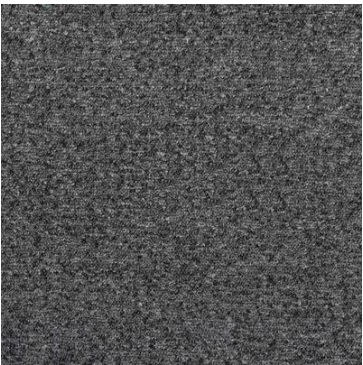
Berry



Blush



Coal



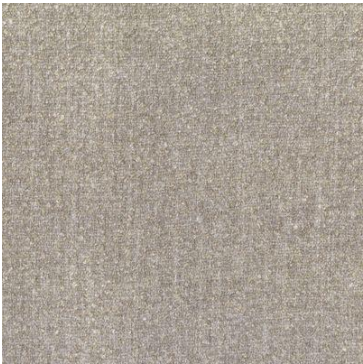
Grey



Ink



Ivory



Linen



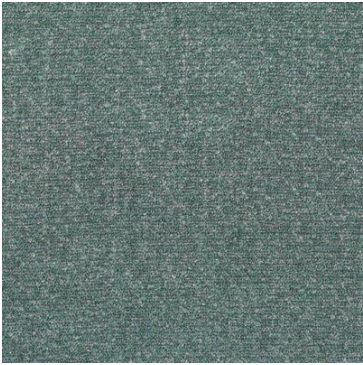
Moss



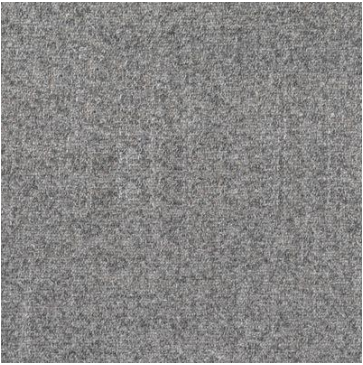
Ocean



Pickle



Seaglass



Silver



Taupe



Terra



Wheat