





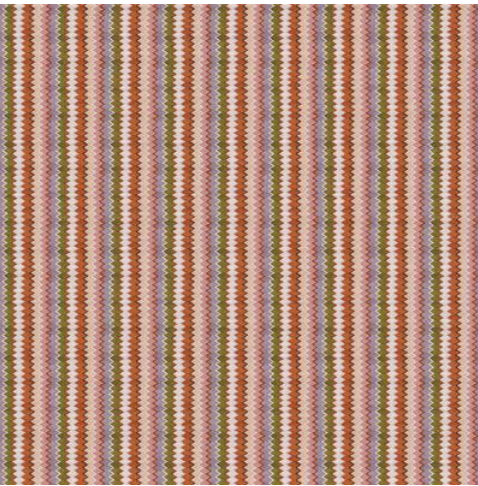
Boden

Collection(s)	Fiske
Colour(s)	Autumn, Spring, Winter
Product Type(s)	Drapery Upholstery (General Domestic)
Attributes	Warwick Naturally, Oekotex Standard 100
Styles	Classic, Geometric, Small Scale, Rustic, Eclectic
Composition	100% Cotton
Pattern Match	Yes
Pattern Repeat (cm)	Horizontal: 30cm, Vertical: Stripe
Railroaded	No
Continuous	No
Self-Weighted	No
Width (cm)	139
Roll Size (approx)	30m
Weight (gsm)	225
Stain Repellent	No
FIAA Care Label	FIAA Care Label 3 - Non Pile Fabrics
WCAA Care Label	WCAA Care Label 10
Usage	 Upholstery  Drapery  Cushion  Lamp Shade Not suitable for roman blinds
Guarantee	3 Years in accordance with our product type and care instructions

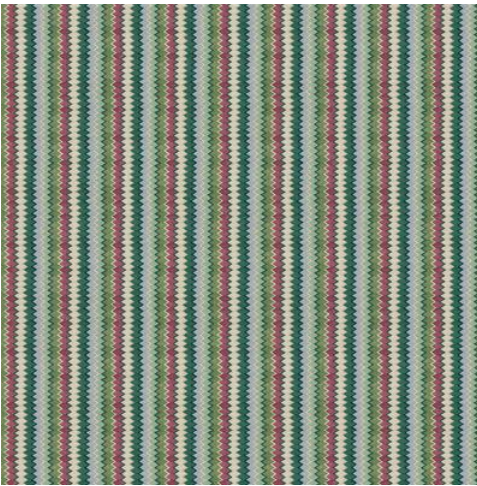
Test Results

Martindale (ISO 12947, 12kPA)	15,000 - 20,000 Cycles
Seam Slippage (mm) (ISO 13936-2, Load 180)	Warp 3.0, Weft 2.0
Pilling Resistance (ISO 12945-2)	4/5
Colourfastness to Light Xenon arc (ISO 105-B02, blue std 6)	>6
Colourfastness to Rubbing (ISO 105-X12)	Dry 4/5, Wet 4
Dimension Change - Laundering (%) (ISO 5077/ISO 6330.7BA)	Warp -4.0, Weft -5.0
Dimension Change - Hanging (%) (AS2663.1.B)	Warp 0.4, Weft 0.5
Free and Hydrolysed Formaldehyde (ISO 14184-1:1998)	Not Detectable
Flammability AS/NZS 1530.2 - 1993 Flammability Index (0-100) Spread Factor (0-40) Heat Factor (0 upward)	- Length -, Width - Length -, Width -
Flammability AS/NZS 1530.3 - 1999 Ignitability (0-20) Spread of Flame (0-10) Heat Involved (0-10) Smoke Developed (0-10)	- - - -
Oekotex Standard 100	1705022 CENTEXBEL

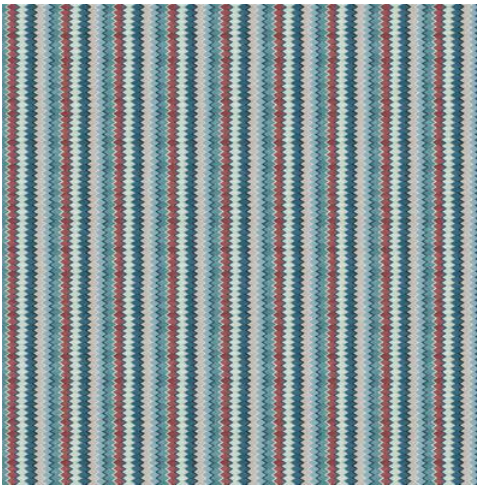
Boden



Autumn



Spring



Winter