




# L I N I A

## Campari

Collection(s)	Campari
Colour(s)	Ebony, Latte, Lime, Peacock, Spritz, Terrazzo
Product Type(s)	Upholstery (Heavy Commercial)
Attributes	Oekotex Standard 100
Styles	Plain, Geometric, Check, Rustic, Eclectic
Composition	43% Polyester Cotton 19% Wool 16% Polyester 15% Cotton 7% Viscose
Pattern Match	No
Pattern Repeat (cm)	Plain
Railroaded	Plain Fabrics marked Railroaded 'Plain' can be cut in either direction at the discretion of the manufacturer, and in consultation with the customer's preference. Fabric is sampled in the direction it comes up the roll (Non Railroaded).
Width (cm)	138
Roll Size (approx)	25m
Weight (gsm)	740
Origin	Italy
Stain Repellent	No
FIAA Care Label	<a href="#">FIAA Care Label 3 - Non Pile Fabrics</a>
Usage	 Upholstery  Cushion  Lamp Shade
Guarantee	3 Years in accordance with our product type and care instructions

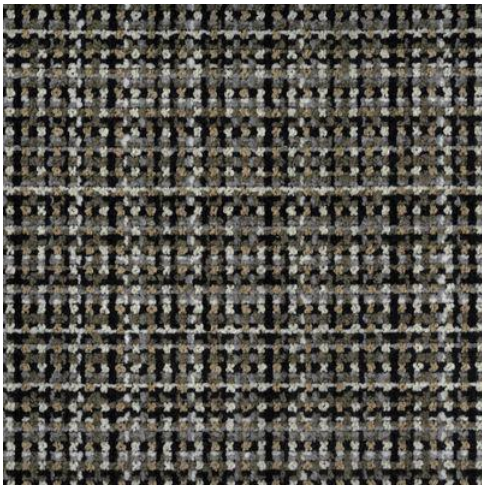
## Test Results

Martindale (ISO 12947, 12kPA)	50,750 Cycles
Seam Slippage (mm) (ISO 13936-2, Load 180)	Warp 1.0, Weft 1.5
Pilling Resistance (ISO 12945-2)	4
Colourfastness to Light Xenon arc (ISO 105-B02, blue std 6)	6-7
Colourfastness to Rubbing (ISO 105-X12)	Dry 4-5, Wet 4-5
Free and Hydrolysed Formaldehyde (ISO 14184-1:1998)	Tbc
Flammability AS/NZS 1530.3 - 1999 Ignitability (0-20) Spread of Flame (0-10) Heat Involved (0-10) Smoke Developed (0-10)	- - - -
Oekotex Standard 100	18CX00015.O



Warwick Fabrics (Australia) Pty Ltd ABN 56 004 832 455 sales@warwick.com.au www.warwick.com.au	National Sales Service T 1300 787 888 (toll free in Australia) F +61 (0) 3 9415 7236 F +61 (0) 3 9416 1060	Melbourne 6 - 10 Sackville Street PO Box 1242 Collingwood VIC 3066 T +61 (0) 3 9419 7544
--	---	--

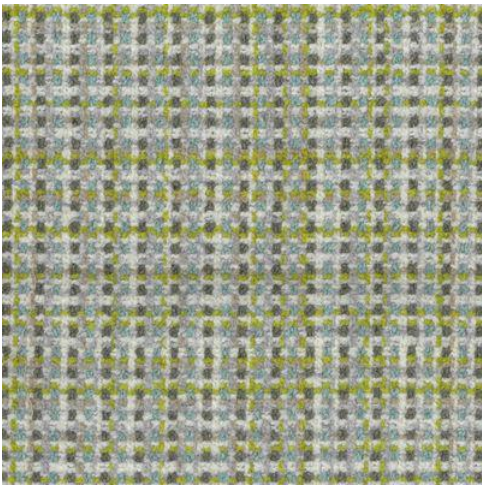
Linia Campari



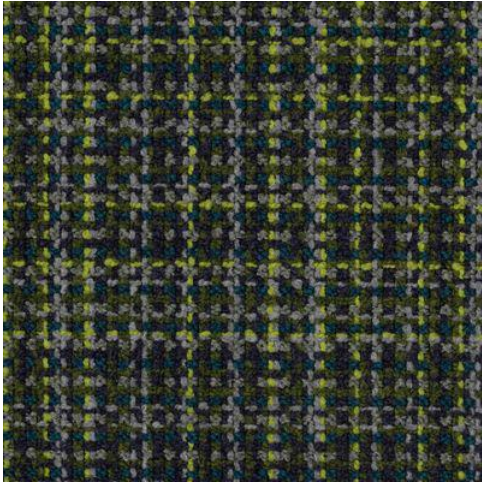
Ebony



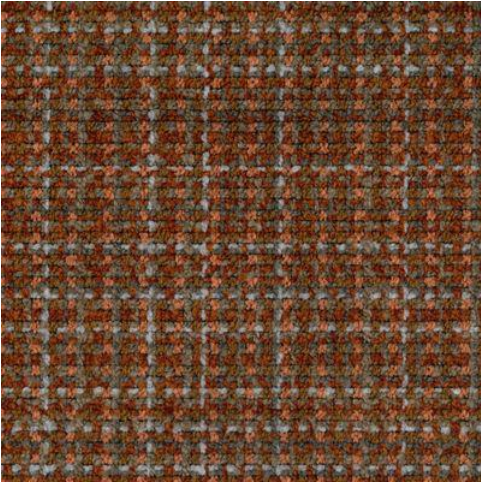
Latte



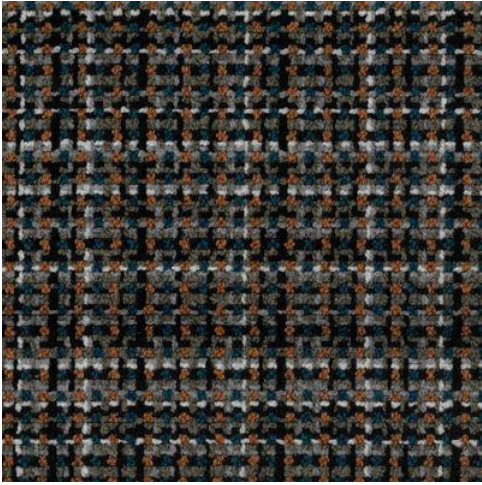
Lime



Peacock



Spritz



Terrazzo