




Emir

| | |
|---------------------|--|
| Collection(s) | Highlands, Maclaren, Fairhaven, Osiris |
| Colour(s) | Alabaster, Azure, Black, Blue, Charcoal, Custard, Fawn, Forest, Lilac, Linen, Navy, Ochre, Red, Rouge, Sage, Silver, Sky, Taupe, Terracotta, Wheat |
| Product Type(s) | Upholstery (Heavy Commercial) |
| Attributes | Halo Easy Care, Oekotex Standard 100 |
| Styles | Plain, Texture, Urban, Modern, Industrial |
| Composition | 100% Polyester |
| Pattern Match | No |
| Pattern Repeat (cm) | Plain |
| Railroaded | Plain Fabrics marked Railroaded 'Plain' can be cut in either direction at the discretion of the manufacturer, and in consultation with the customer's preference. Fabric is sampled in the direction it comes up the roll (Non Railroaded). |
| Width (cm) | 140 |
| Roll Size (approx) | 45m |
| Weight (gsm) | 300 |
| Origin | Non European |
| Stain Repellent | No |
| FIAA Care Label | FIAA Care Label 3 - Non Pile Fabrics |
| Usage |  Upholstery  Cushion  Lamp Shade |
| Guarantee | 3 Years in accordance with our product type and care instructions |

Test Results

| | |
|--|----------------------|
| Martindale (ISO 12947, 12kPA) | 90,000 Cycles |
| Seam Slippage (mm) (ISO 13936-2, Load 180) | Warp 4.5, Weft 4.4 |
| Pilling Resistance (ISO 12945-2) | 5 |
| Colourfastness to Light Xenon arc (ISO 105-B02, blue std 6) | 5/6 |
| Colourfastness to Rubbing (ISO 105-X12) | Dry 5, Wet 5 |
| Free and Hydrolysed Formaldehyde (ISO 14184-1:1998) | Not Detectable |
| Flammability AS/NZS 1530.3 - 1999 | |
| Ignitability (0-20) | 12 |
| Spread of Flame (0-10) | 0 |
| Heat Involved (0-10) | 3 |
| Smoke Developed (0-10) | 4 |
| Oekotex Standard 100 | 13.HTR.25109 HONENST |

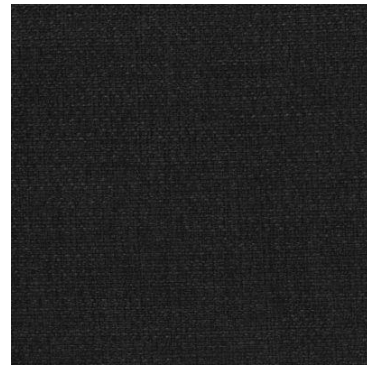
Emir



Alabaster



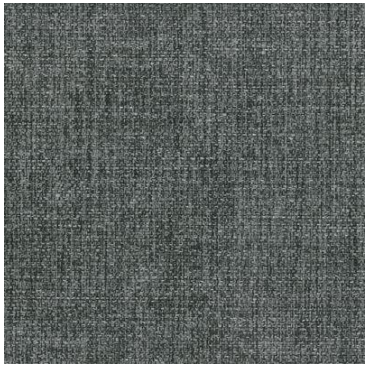
Azure



Black



Blue



Charcoal



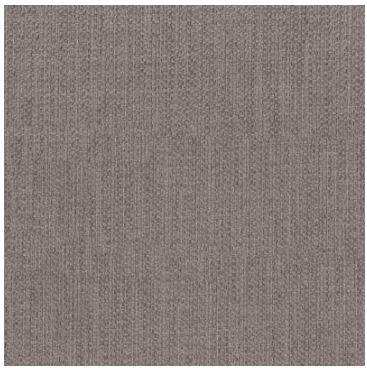
Custard



Fawn



Forest



Lilac



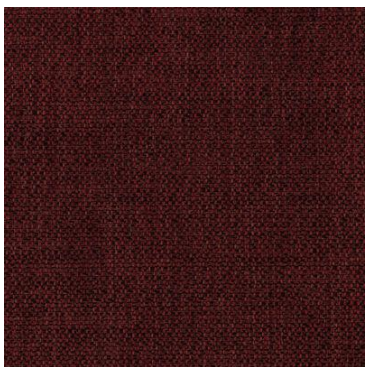
Linen



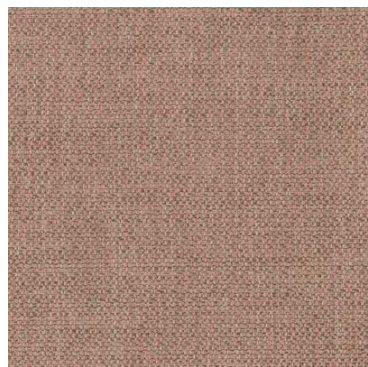
Navy



Ochre



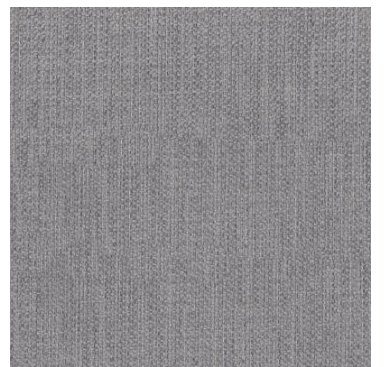
Red



Rouge



Sage



Silver



Sky



Taupe



Terracotta



Wheat