





Habitat

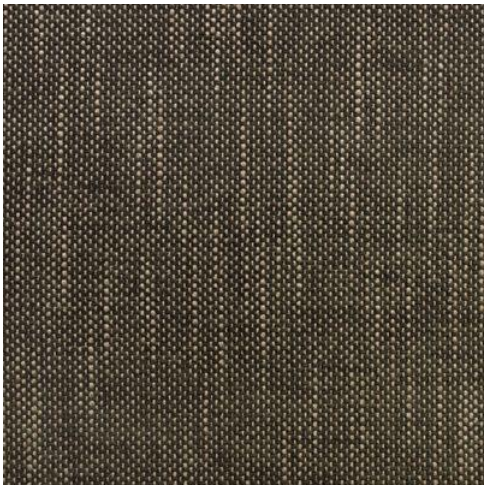
Colour(s)	Chestnut, Mink
Product Type(s)	Upholstery (General Domestic)
Styles	Plain
Composition	48% Viscose 24% Polyester 20% Cotton 8% Linen
Pattern Match	No
Pattern Repeat (cm)	Plain
Railroaded	Plain Fabrics marked Railroaded 'Plain' can be cut in either direction at the discretion of the manufacturer, and in consultation with the customer's preference. Fabric is sampled in the direction it comes up the roll (Non Railroaded).
Width (cm)	144
Roll Size (approx)	50m
Weight (gsm)	496
Origin	European
Stain Repellent	No
FIAA Care Label	FIAA Care Label 1 - Pile Fabrics, Velvets & Chenille Wovens
Usage	<div><div>Upholstery</div><div>Cushion</div><div>Lamp Shade</div><div>Bedspread</div></div>
Guarantee	3 Years in accordance with our product type and care instructions

Test Results

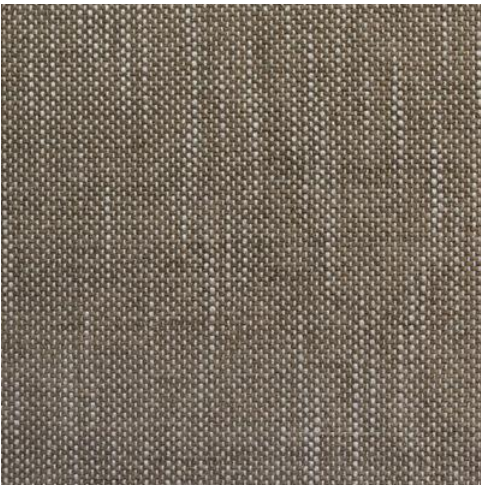
Martindale (ISO 12947, 12kPA)	15,000 - 20,000 Cycles
Seam Slippage (mm) (ISO 13936-2, Load 180)	Warp 3.0, Weft 4.4
Pilling Resistance (ISO 12945-2)	5
Colourfastness to Light Xenon arc (ISO 105-B02, blue std 6)	>6
Colourfastness to Rubbing (ISO 105-X12)	Dry 5, Wet 4/5
Free and Hydrolysed Formaldehyde (ISO 14184-1:1998)	Not Detectable
Flammability AS/NZS 1530.3 - 1999 Ignitability (0-20) Spread of Flame (0-10) Heat Involved (0-10) Smoke Developed (0-10)	- - - -



# Habitat



Chestnut



Mink