




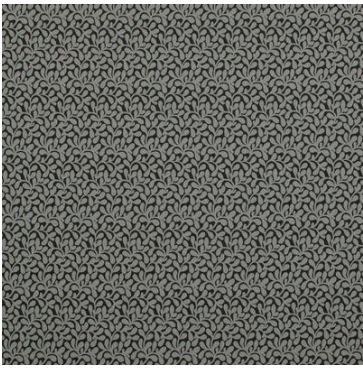
## Nanuya

Collection(s)	Sundec Outdoor, Nanuya Outdoor
Colour(s)	Basalt, Gull, Hibiscus, Lobster, Marine, Palm, Reef, Sand
Product Type(s)	Drapery   Upholstery (General Domestic)
Attributes	Halo Easy Care, SunDec Outdoor, Washable, Oekotex Standard 100
Styles	Florals & Botanical, Contemporary
Composition	100% Olefin
Pattern Match	Yes
Pattern Repeat (cm)	Horizontal: 12cm, Vertical: 23cm
Railroaded	No
Continuous	No
Self-Weighted	No
Width (cm)	140
Roll Size (approx)	50m
Weight (gsm)	303
Origin	Non European
Stain Repellent	Fluro Chem
FIAA Care Label	<a href="#">FIAA Care Label S - SunDec Outdoor</a>
WCAA Care Label	<a href="#">WCAA Care Label 7</a>
Usage	 Upholstery  Drapery  Cushion                 Not suitable for roman blinds
Guarantee	3 Years in accordance with our product type and care instructions

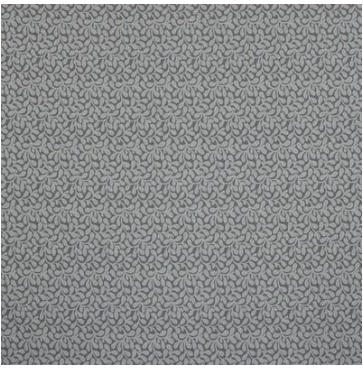
## Test Results

Martindale (ISO 12947, 12kPA)	15,000 - 20,000 Cycles
Seam Slippage (mm) (ISO 13936-2, Load 180)	Warp 4.3, Weft 4
Pilling Resistance (ISO 12945-2)	5
Colourfastness to Light Xenon arc (ISO 105-B02, blue std 6)	>7
Colourfastness to Rubbing (ISO 105-X12)	Dry 5, Wet 5
Dimension Change - Laundering (%) (ISO 5077/ISO 6330. 7BA)	Warp -0.6, Weft -0.3
Dimension Change - Hanging (%) (AS2663.1.B)	Warp 0.2, Weft 0.2
Free and Hydrolysed Formaldehyde (ISO 14184-1:1998)	Not Detectable
Flammability AS/NZS 1530.2 - 1993 Flammability Index (0-100) Spread Factor (0-40) Heat Factor (0 upward)	- Length -, Width - Length -, Width -
Flammability AS/NZS 1530.3 - 1999 Ignitability (0-20) Spread of Flame (0-10) Heat Involved (0-10) Smoke Developed (0-10)	16 0 0 3
Oekotex Standard 100	11.HTR.97794 HOHENST
Quality Management System ISO9001	Yes

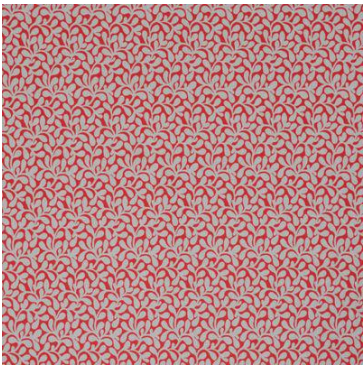
# Nanuya



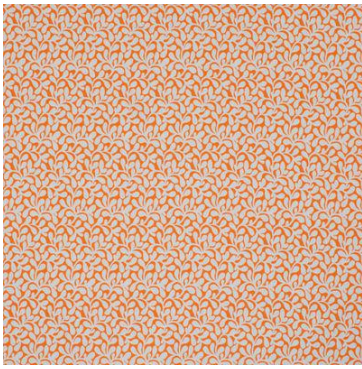
Basalt



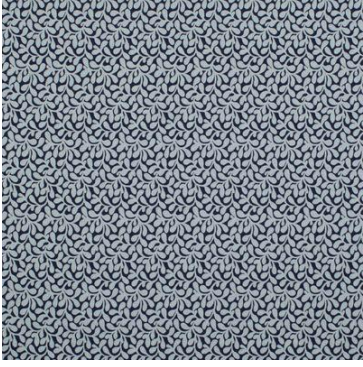
Gull



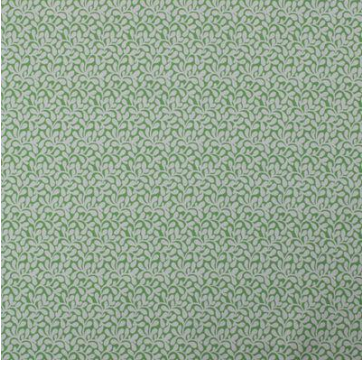
Hibiscus



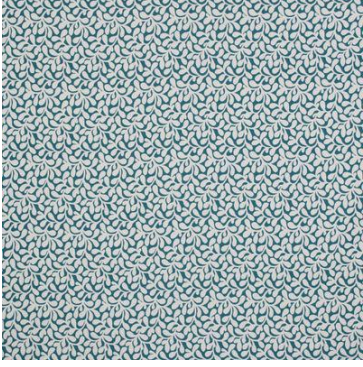
Lobster



Marine



Palm



Reef



Sand