



Collection(s)	Anglesea (tritan) Book
Colour(s)	Ballet, Bison, Bluebell, Boysenberry, Brick, Cloud, Coffee, Coral, Driftwood, Ecru, Gull, Kingfisher, Lemon, Mallard, Olive, Opal, Pebble, Pepper, Raven, Shadow, Tahini
Product Type(s)	Upholstery (Heavy Commercial)
Attributes	Tritan Moisture Barrier, Australian Made
Styles	Plain, Contemporary, Urban, Modern
Composition	54% Acrylic 34% Polyester 12% Cotton
Pattern Match	No
Pattern Repeat (cm)	Plain
Railroaded	Plain Fabrics marked Railroaded 'Plain' can be cut in either direction at the discretion of the manufacturer, and in consultation with the customer's preference. Fabric is sampled in the direction it comes up the roll (Non Railroaded).
Width (cm)	137
Roll Size (approx)	50m
Weight (gsm)	530
Origin	Australian
Stain Repellent	Fluro Chem
FIAA Care Label	<a href="#">FIAA Care Label 11 - Tritan Bleach Clean</a>
Usage	<div><div>Upholstery</div><div>Cushion</div></div>
Guarantee	3 Years in accordance with our product type and care instructions

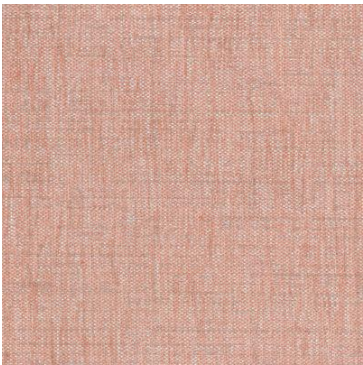
Test Results

Wyzenbeek (ASTM D3597, mesh, 4lb/3lb)	100,000 Cycles
Seam Slippage (mm) (ISO 13936-2, Load 180)	Warp 3, Weft 3.8
Pilling Resistance (ISO 12945-2)	5
Colourfastness to Light Xenon arc (ISO 105-B02, blue std 6)	>6
Colourfastness to Rubbing (ISO 105-X12)	Dry 5, Wet 4/5
Free and Hydrolysed Formaldehyde (ISO 14184-1:1998)	Not Detectable
Flammability AS/NZS 1530.3 - 1999 Ignitability (0-20) Spread of Flame (0-10) Heat Involved (0-10) Smoke Developed (0-10)	12 8 4 5

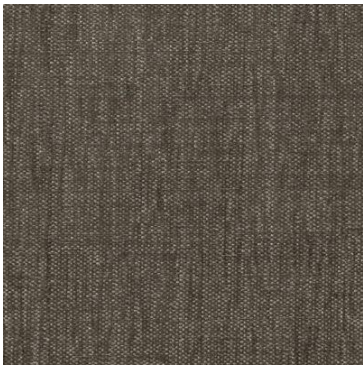




# Ventura (Tritan)



Ballet



Bison



Bluebell



Boysenberry



Brick



Cloud



Coffee



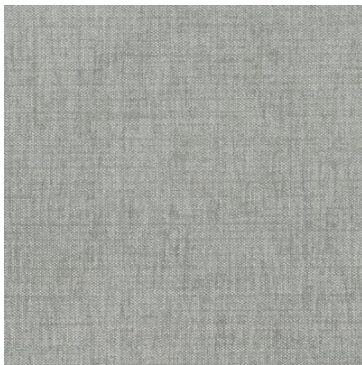
Coral



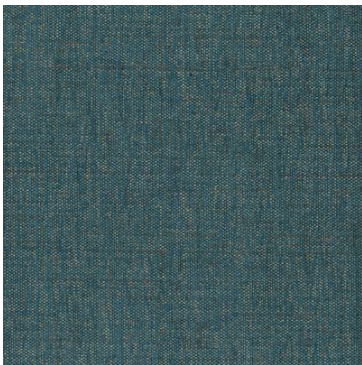
Driftwood



Ecru



Gull



Kingfisher



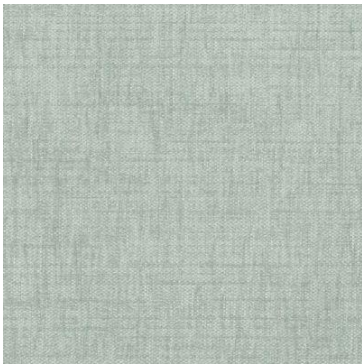
Lemon



Mallard



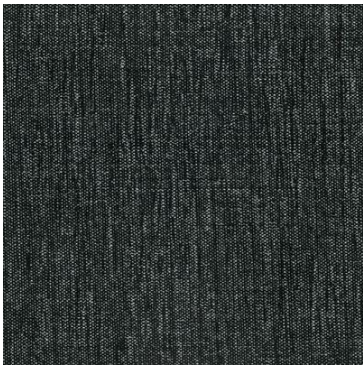
Olive



Opal



Pebble



Pepper



Raven



Shadow



Tahini