


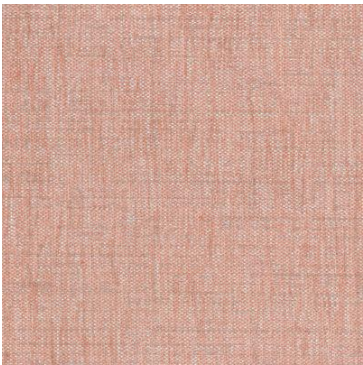


Collection(s)	Verona (new Colours)
Colour(s)	Ballet, Bison, Bluebell, Cloud, Coffee, Coral, Driftwood, Kingfisher, Mallard, Marine, Nougat, Opal, Pebble, Pepper, Raven, Reef, Seaspray, Shadow, Tahini
Product Type(s)	Upholstery (Heavy Commercial)
Styles	Plain, Texture, Urban, Modern, Industrial, Hamptons
Composition	54% Acrylic 34% Polyester 12% Cotton
Pattern Match	No
Pattern Repeat (cm)	Plain
Railroaded	Plain Fabrics marked Railroaded 'Plain' can be cut in either direction at the discretion of the manufacturer, and in consultation with the customer's preference. Fabric is sampled in the direction it comes up the roll (Non Railroaded).
Width (cm)	137
Roll Size (approx)	50m
Weight (gsm)	455
Origin	Non European
Stain Repellent	No
FIAA Care Label	FIAA Care Label 1 - Pile Fabrics, Velvets & Chenille Wovens
Usage	<div><div>Upholstery</div><div>Cushion</div><div>Lamp Shade</div></div>
Guarantee	3 Years in accordance with our product type and care instructions

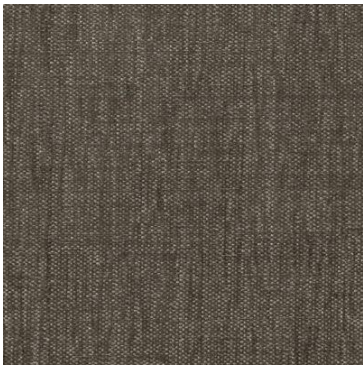
Test Results

Martindale (ISO 12947, 12kPA)	46,000 Cycles
Seam Slippage (mm) (ISO 13936-2, Load 180)	Warp 2.1, Weft 1.9
Pilling Resistance (ISO 12945-2)	5
Colourfastness to Light Xenon arc (ISO 105-B02, blue std 6)	>6
Colourfastness to Rubbing (ISO 105-X12)	Dry 5, Wet 4/5
Free and Hydrolysed Formaldehyde (ISO 14184-1:1998)	Not Detectable
Flammability AS/NZS 1530.3 - 1999	
Ignitability (0-20)	10
Spread of Flame (0-10)	0
Heat Involved (0-10)	2
Smoke Developed (0-10)	5

Verona



Ballet



Bison



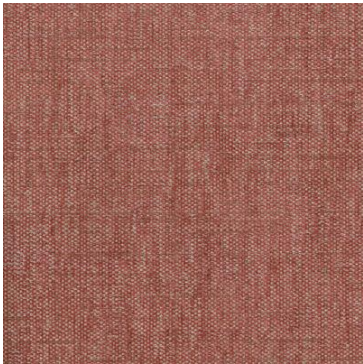
Bluebell



Cloud



Coffee



Coral



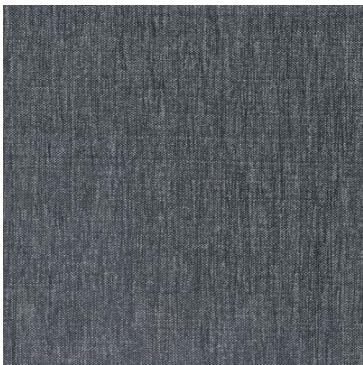
Driftwood



Kingfisher



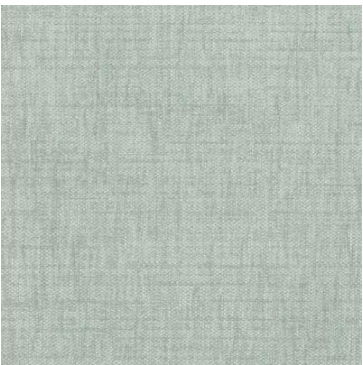
Mallard



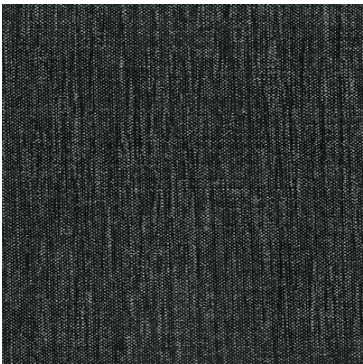
Marine



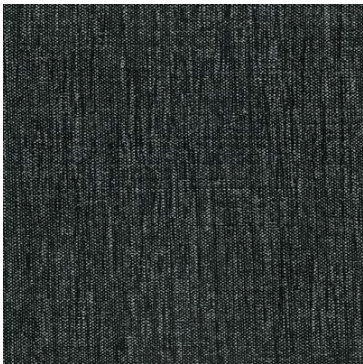
Nougat



Opal



Pebble



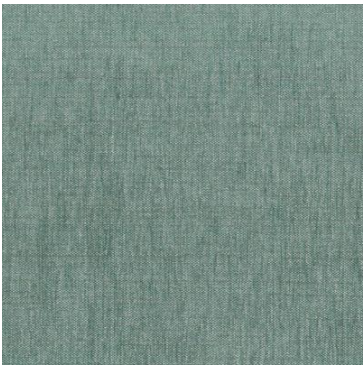
Pepper



Raven



Reef



Seaspray



Shadow



Tahini